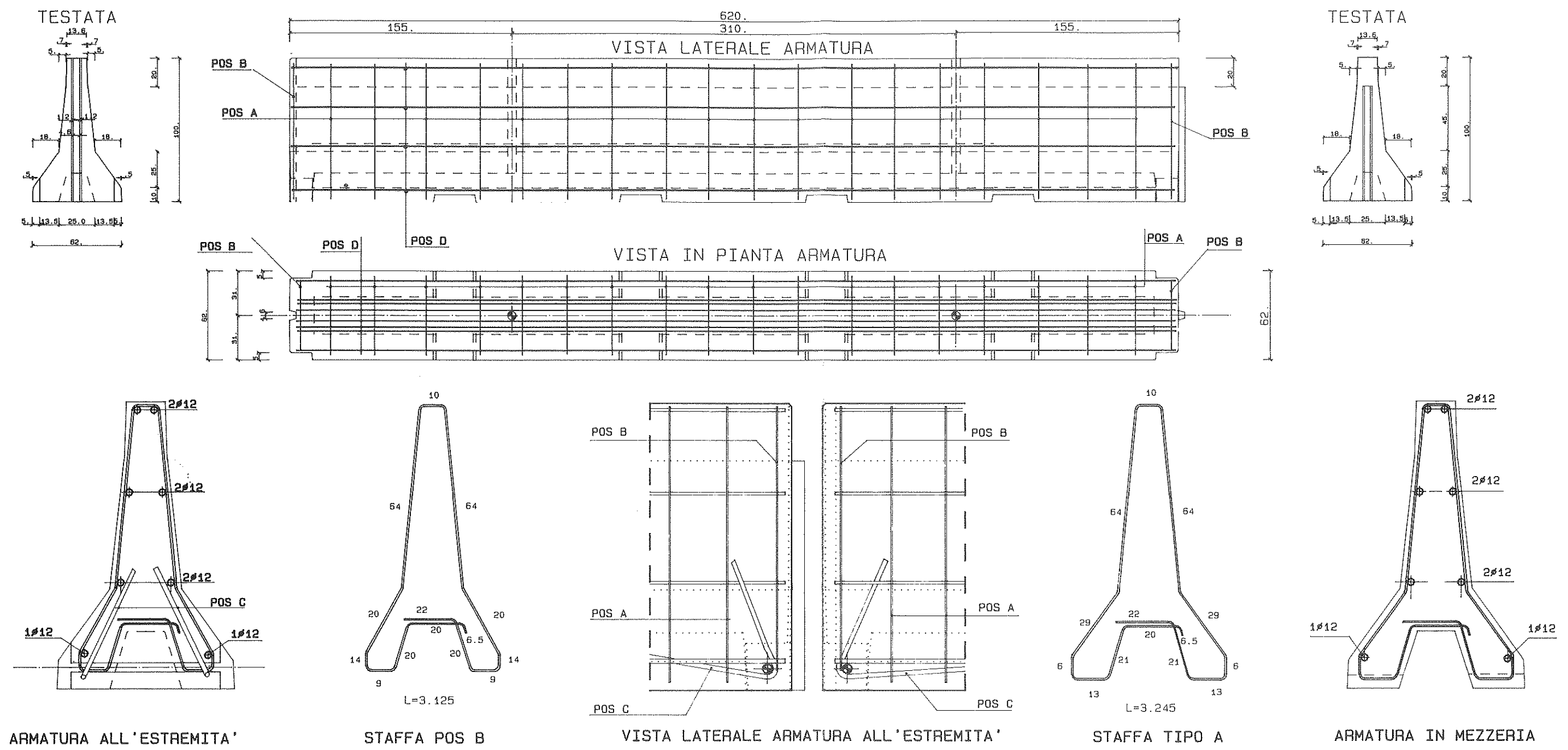
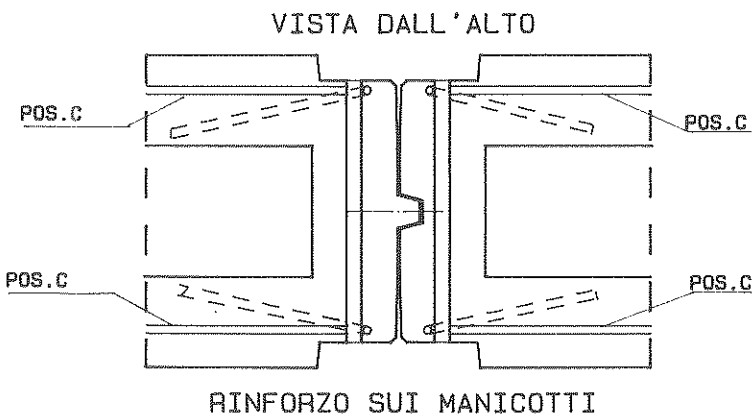
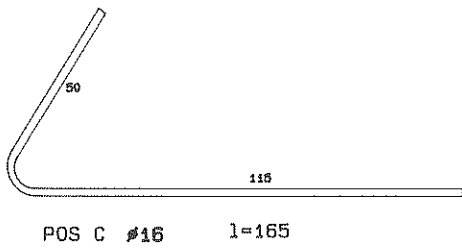
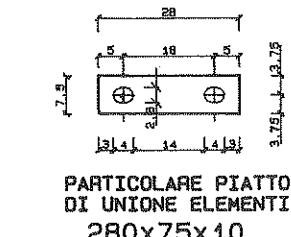
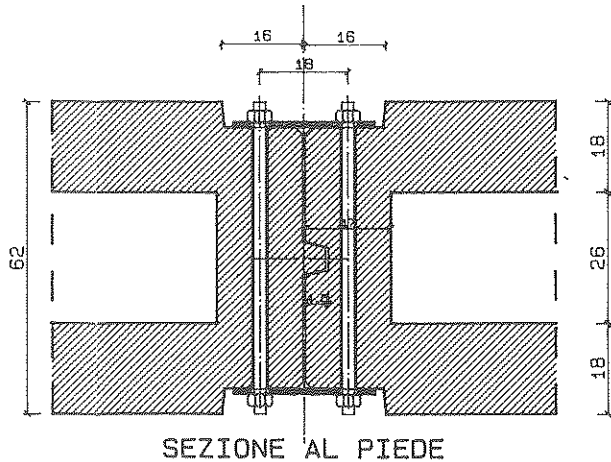
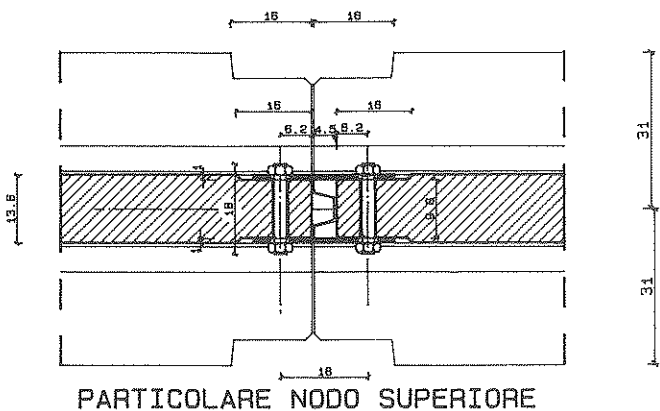
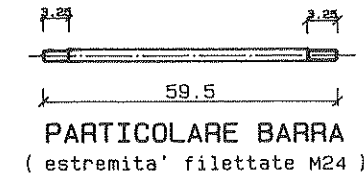
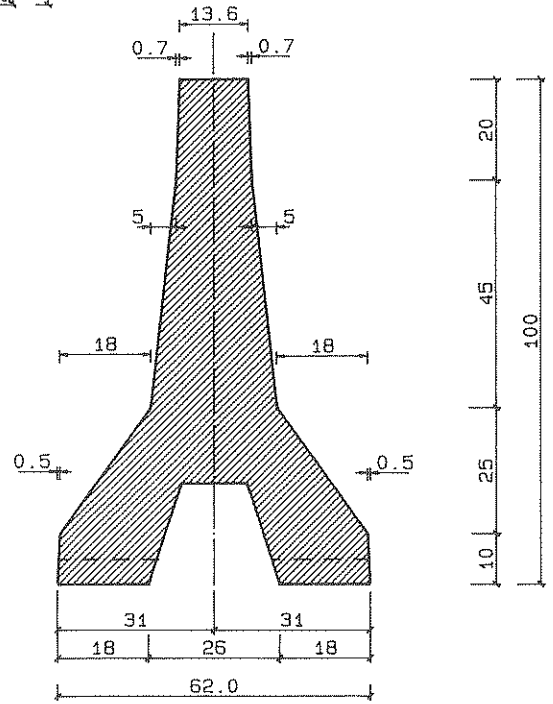
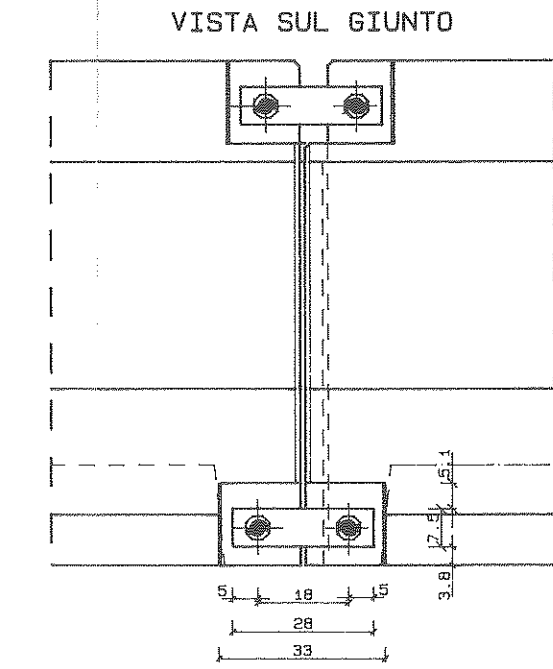
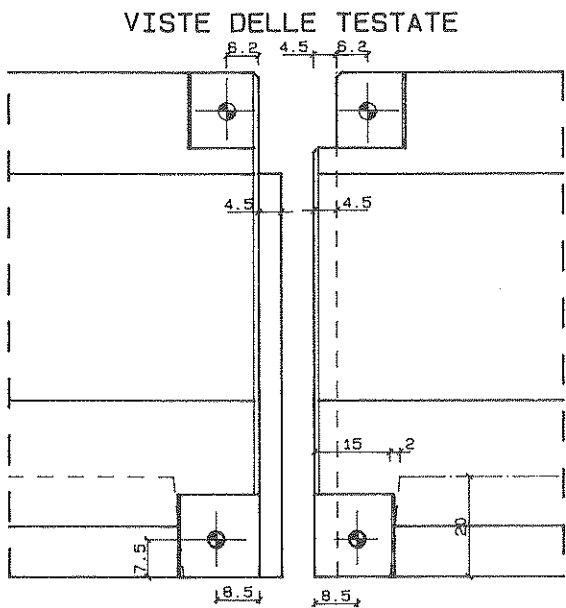
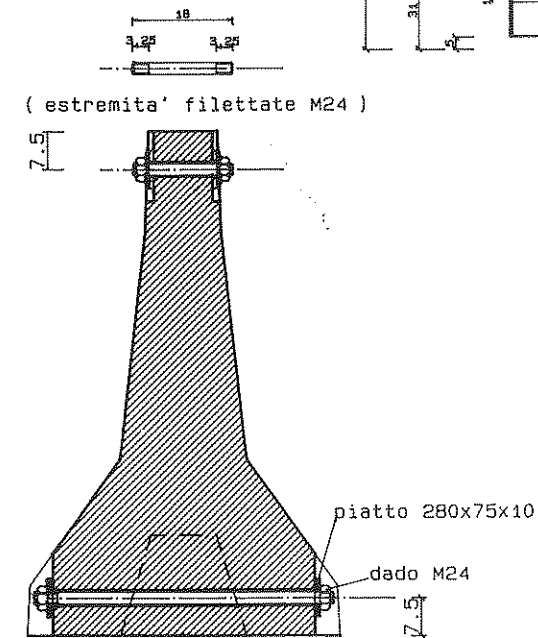
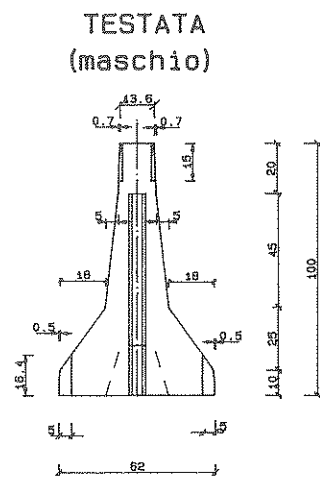
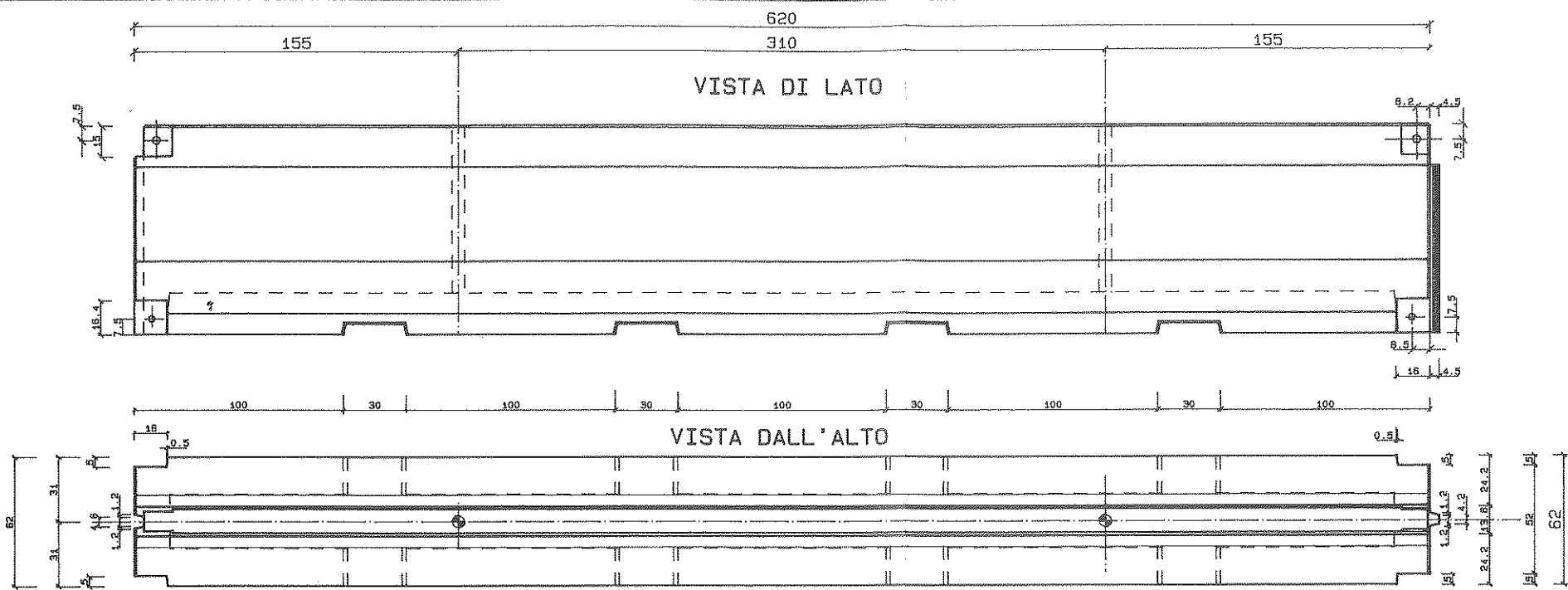
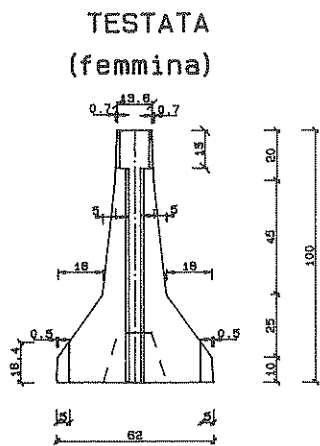


SEZIONE
IN MEZZERIA

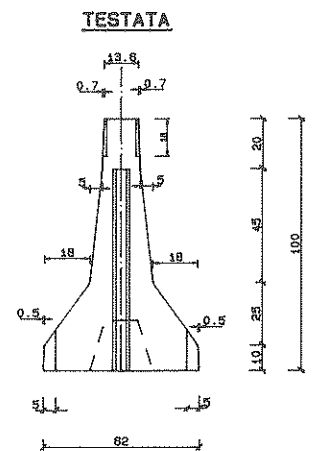


POS.	N.	L.unit.	L.tot.	∅	Tot.kg.
A	18	3.06	55.08	6	12.23
B	2	2.94	5.88	6	1.31
C	4	1.65	6.60	16	10.41
D	8	6.10	48.80	12	43.33
					68.73

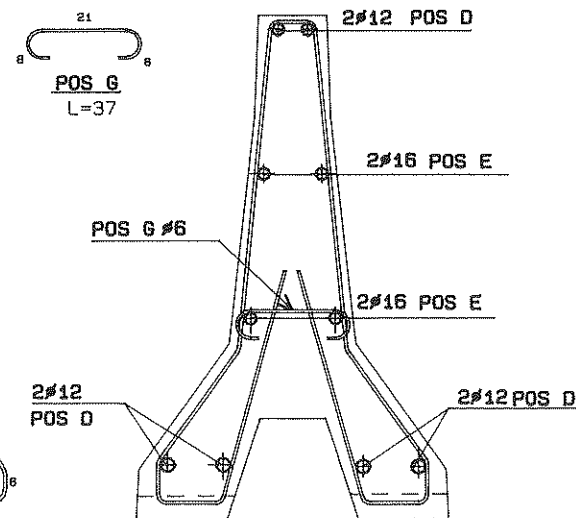




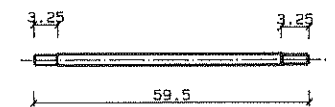
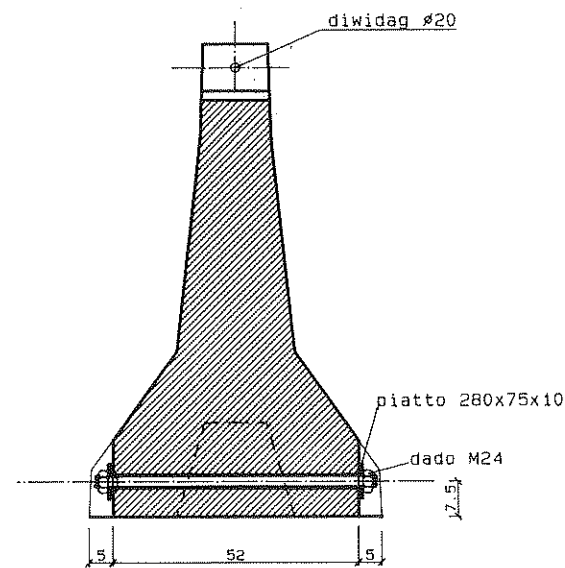
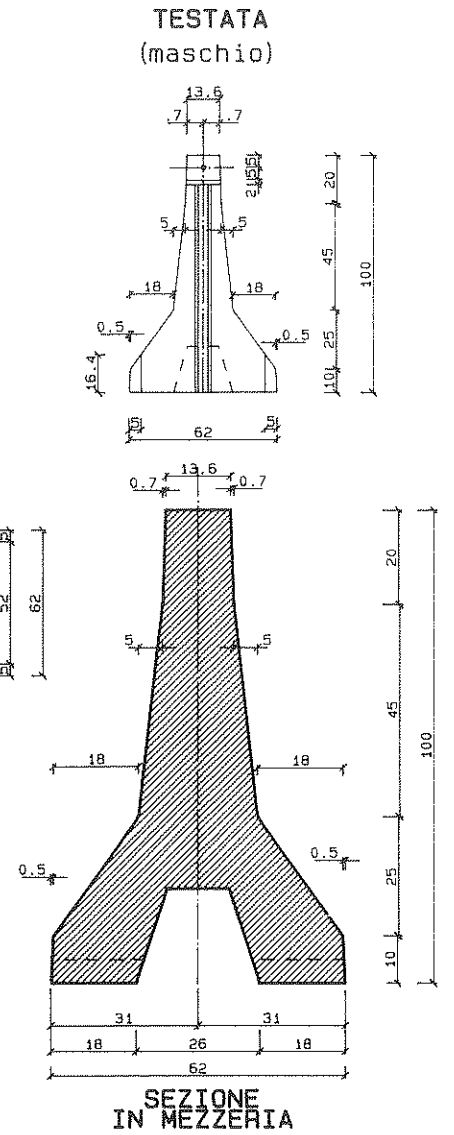
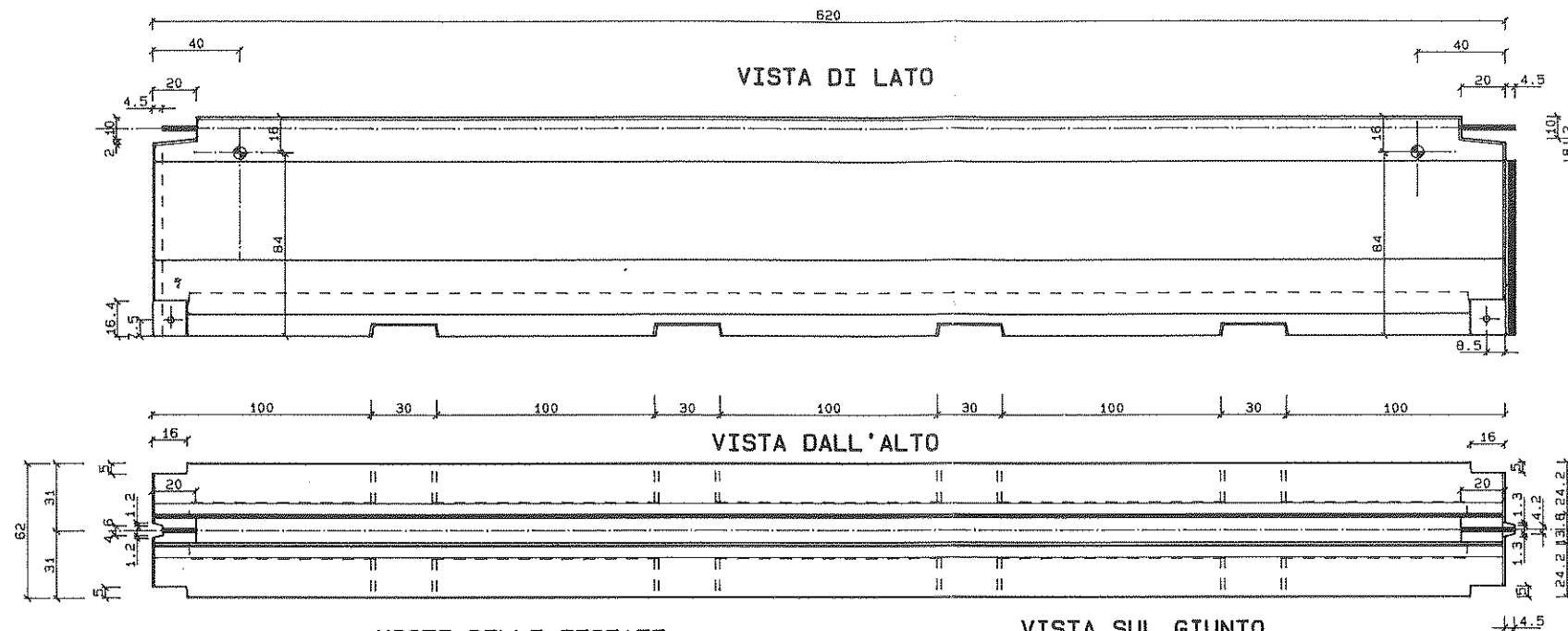
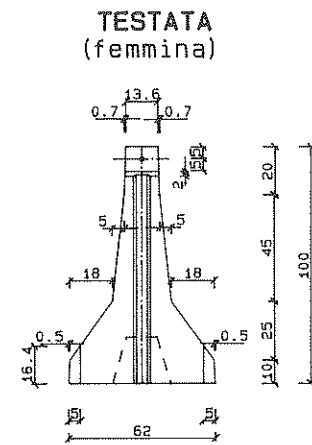
ARMATURA



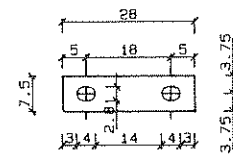
ARMATURA IN MEZZERIA



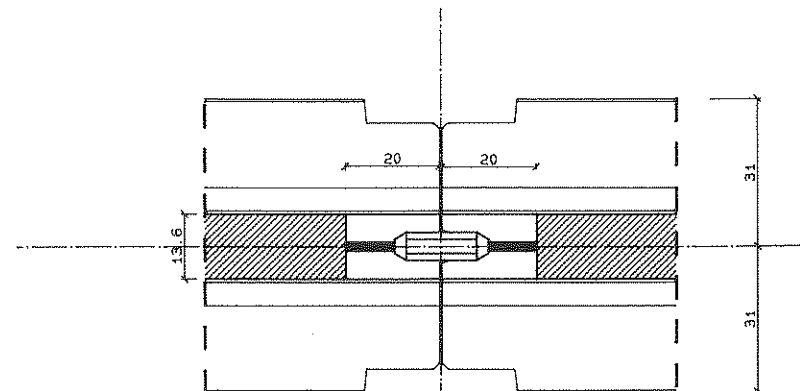
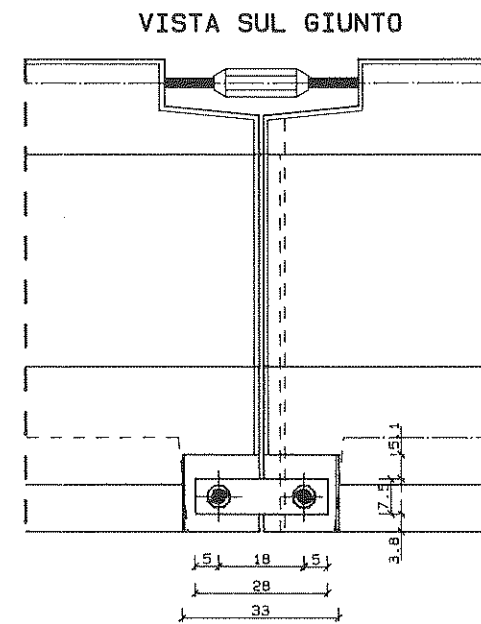
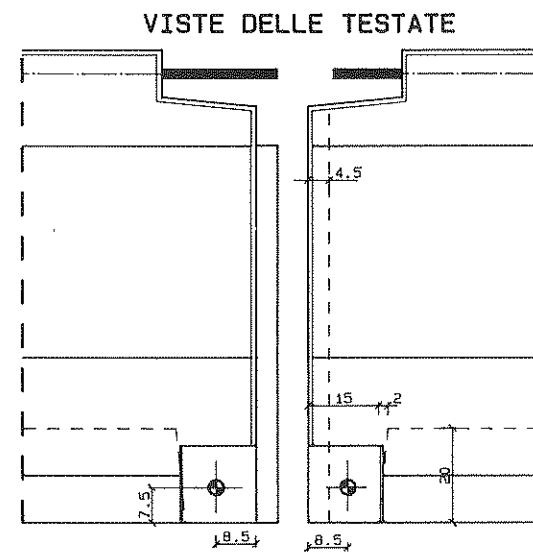
RINFORZO SUI MANICOTTI



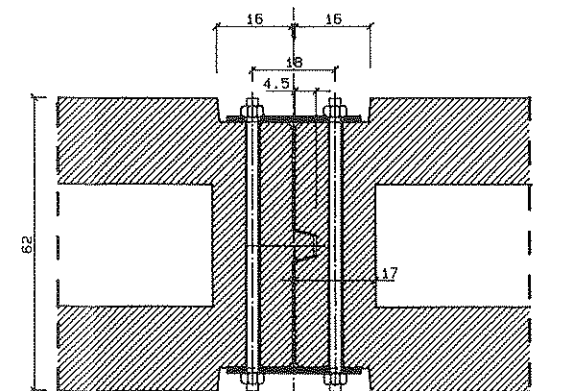
PARTICOLARE BARRA
(estremita' filettate M24)



PARTICOLARE PIATTO
DI UNIONE ELEMENTI
280x75x10



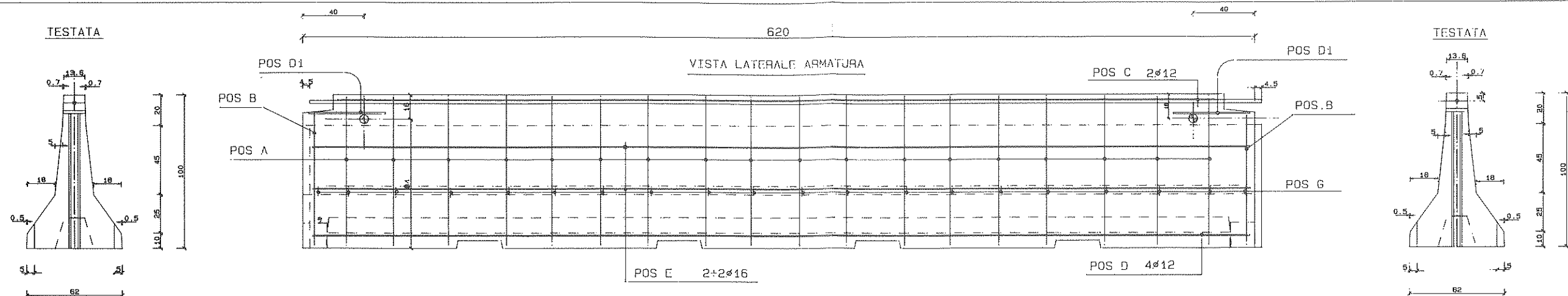
PARTICOLARE SUL NODO SUPERIORE



SEZIONE AL PIEDE

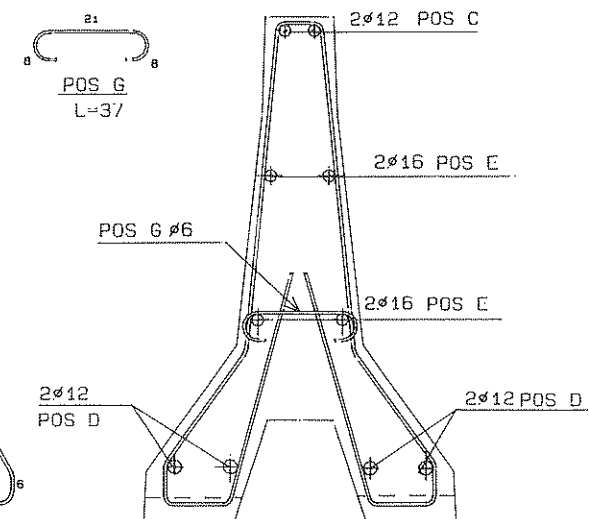
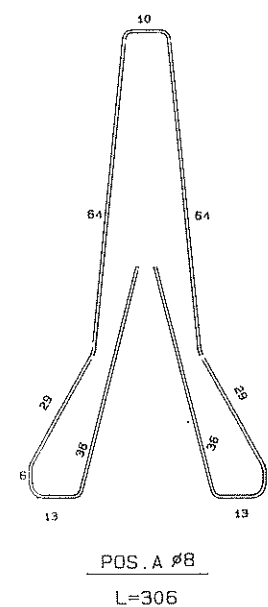
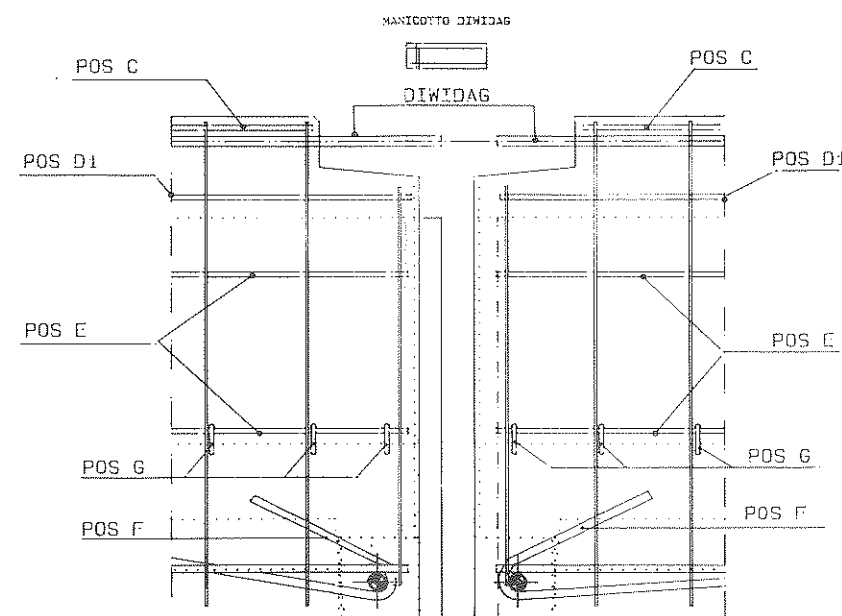
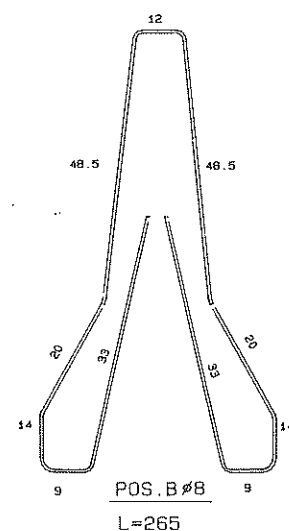
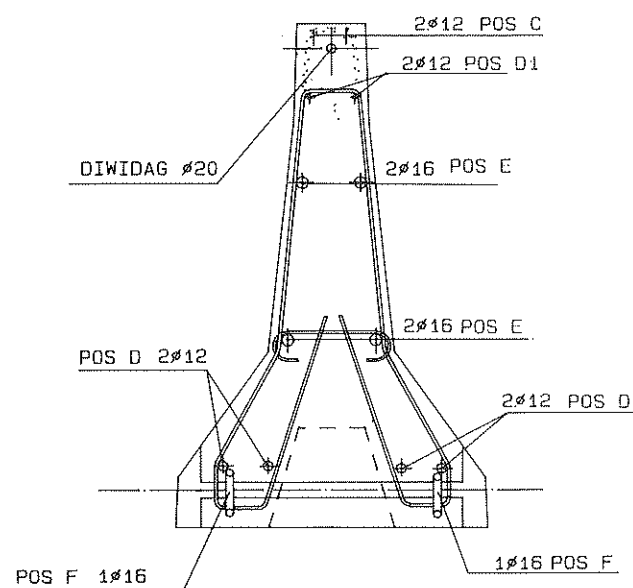
MONOFILARE RINFORZATA

ARMATURA

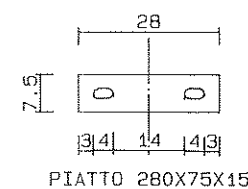
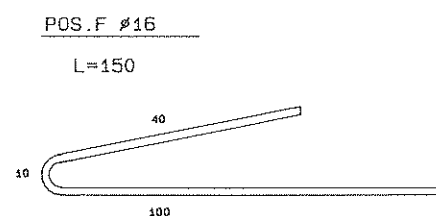


VISTA LATERALE ARMATURA ALL'ESTREMITA'

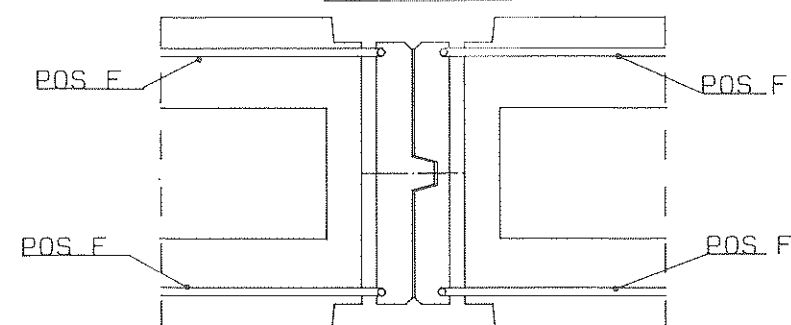
ARMATURA ALL'ESTREMITA'



POS.	N.	L.unit.	L.tot.	Ø	Tot.kg.
A	18	2.94	52.92	Ø8	20.91
B	2	2.65	5.30	Ø8	2.09
C	2	5.70	11.40	Ø12	10.12
D	4	6.13	24.52	Ø12	21.77
E	4	6.13	24.52	Ø16	38.69
F	4	1.50	6.00	Ø16	9.46
G	20	0.37	7.40	Ø6	1.64
D1	2	0.50	2.00	Ø12	1.77
DIWIDAD Ø20 L=6.18					15.23
					121.68



VISTA DALL'ALTO

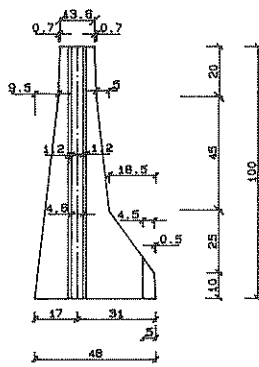


RINFORZO SUI MANICOTTI

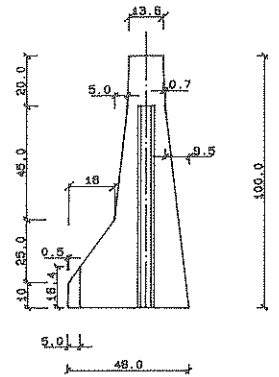
BIFILARE ASIMMETRICA con terra interposta

CARPENTERIA

TESTATA
(femmina)

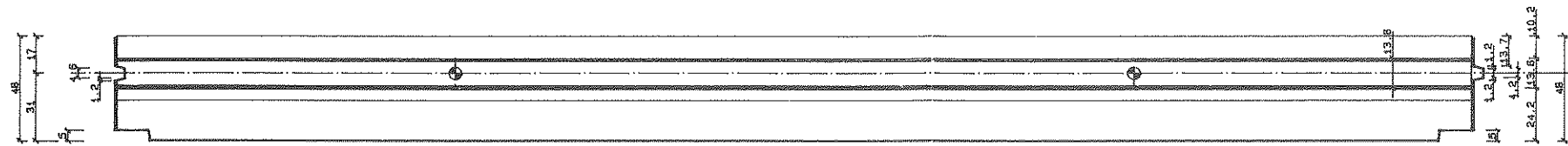


TESTATA
(maschio)

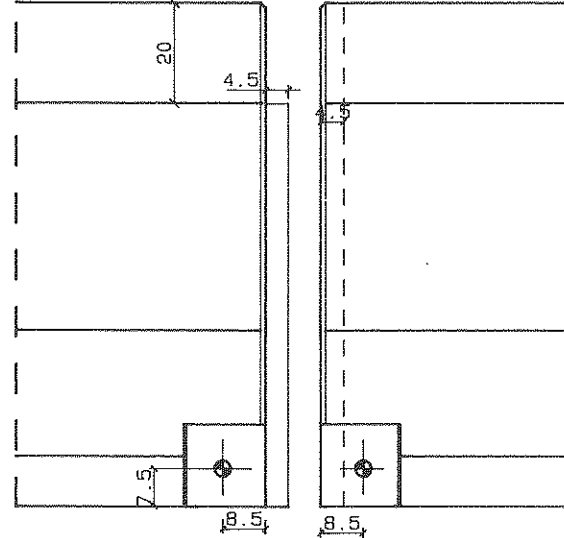


VISTA DI LATO

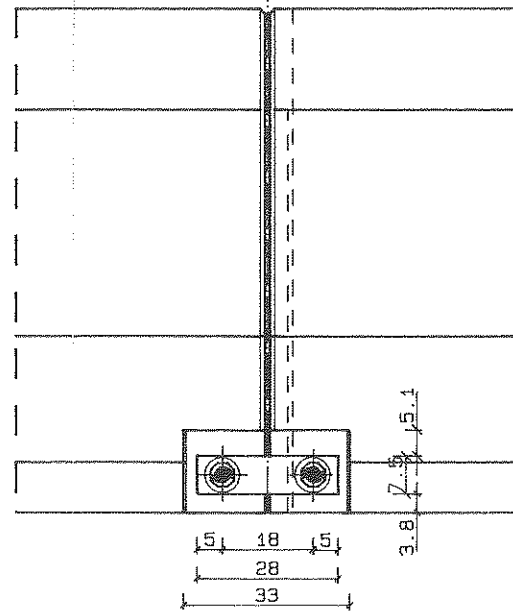
VISTA DALL'ALTO



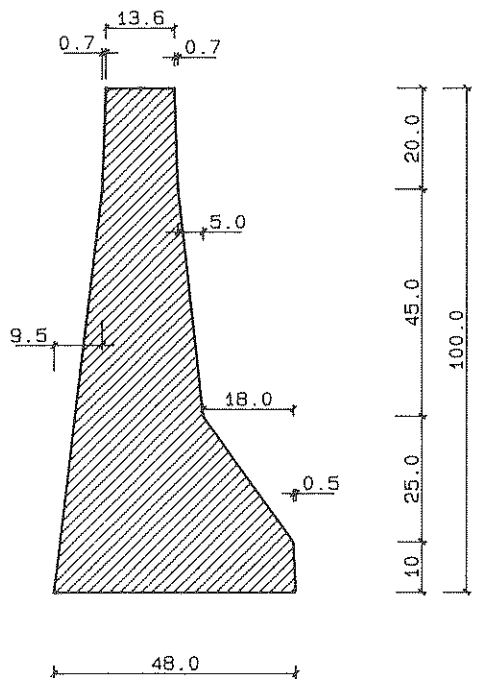
VISTE DELLE TESTATE



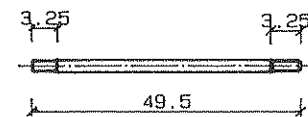
VISTA SUL GIUNTO



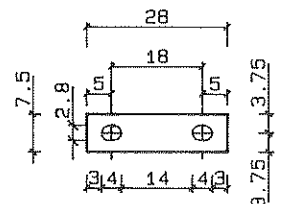
SEZIONE
IN MEZZERIA



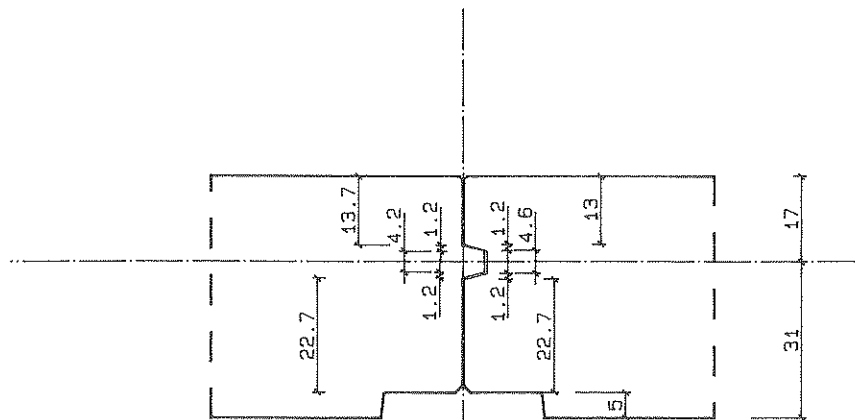
PARTICOLARE BARRA
(estremita' filettate M24)



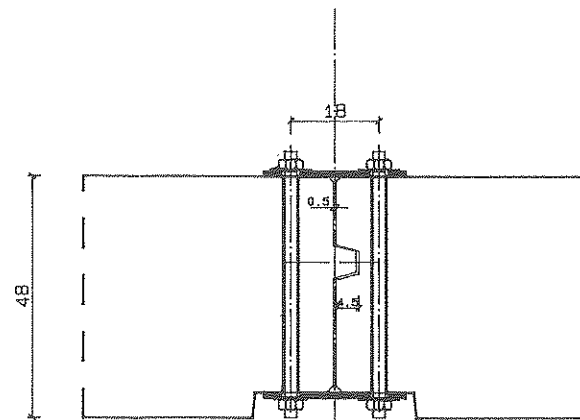
PARTICOLARE PIATTO
DI UNIONE ELEMENTI
280x75x10



PARTICOLARE SUL NODO

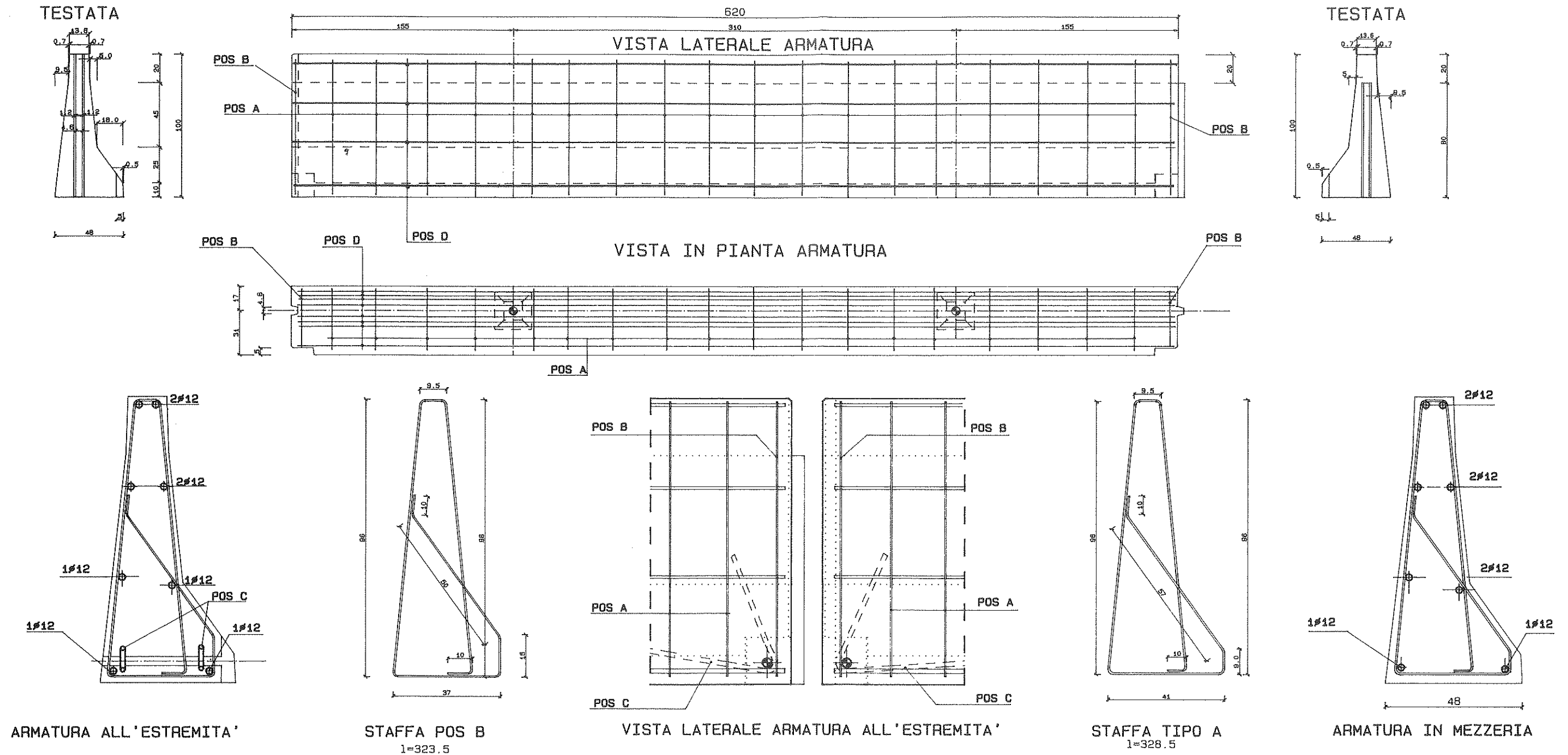


SEZIONE AL PIEDE

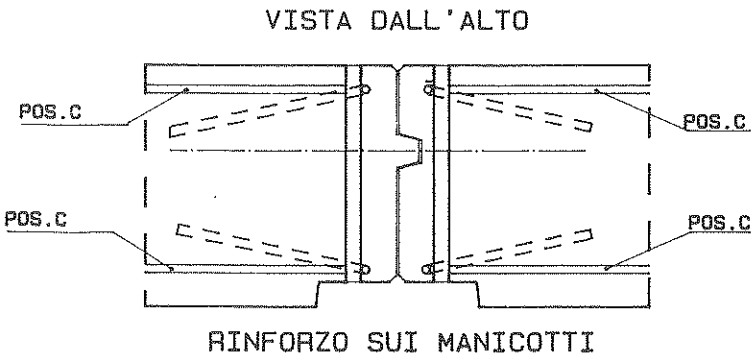
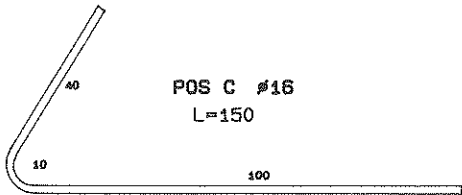


BIFILARE ASIMMETRICA con terra interposta

ARMATURA

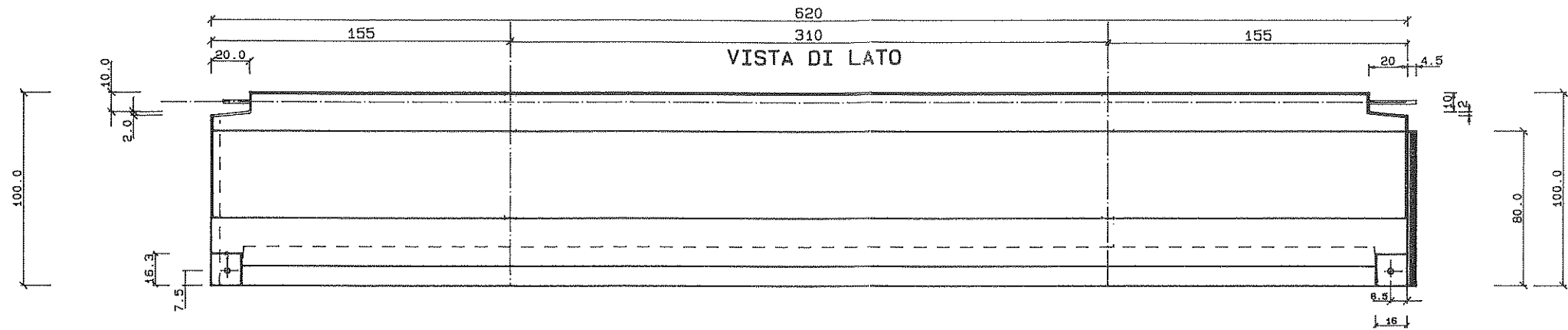


POS.	N.	L.unit.	L.tot.	Ø	Tot.kg.
A	18	3.28	59.04	6	13.10
B	2	3.235	6.47	6	1.43
C	4	1.50	6.00	16	9.47
D	8	6.10	48.80	12	43.33
					67.33

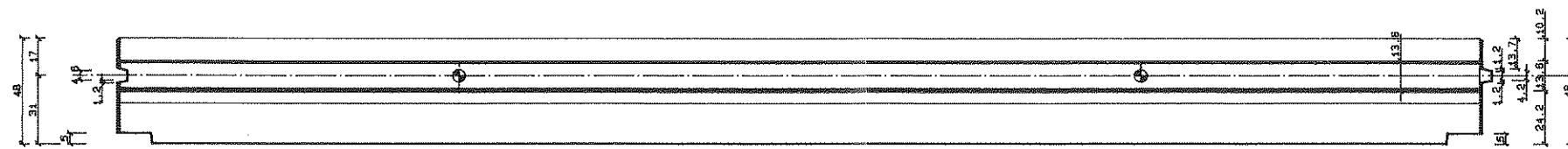


BIFILARE ASIMMETRICA con barra o cavo longitudinale

CARPENTERIA

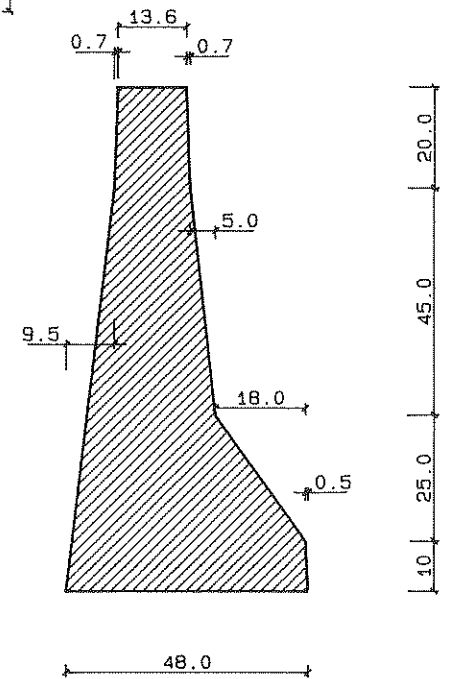
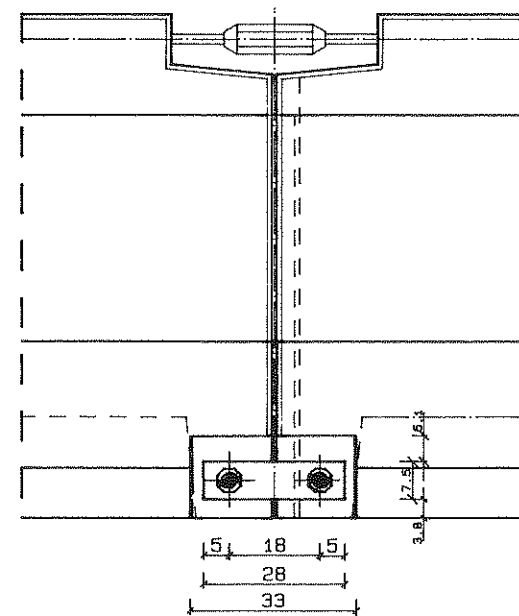
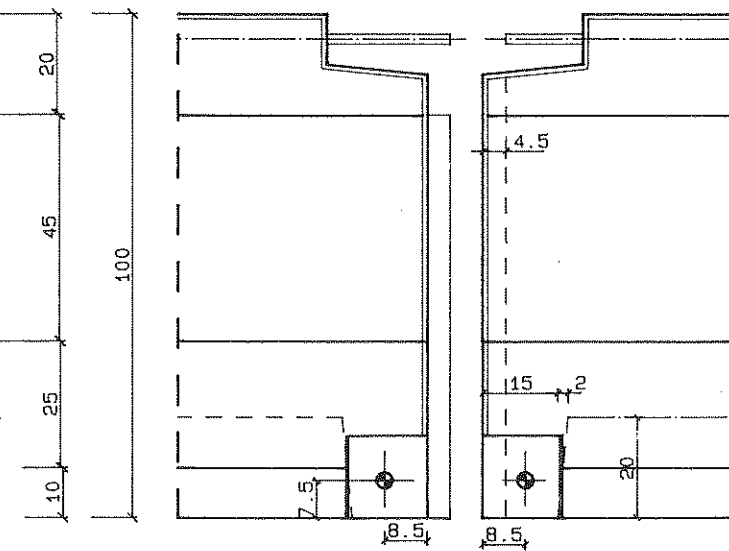
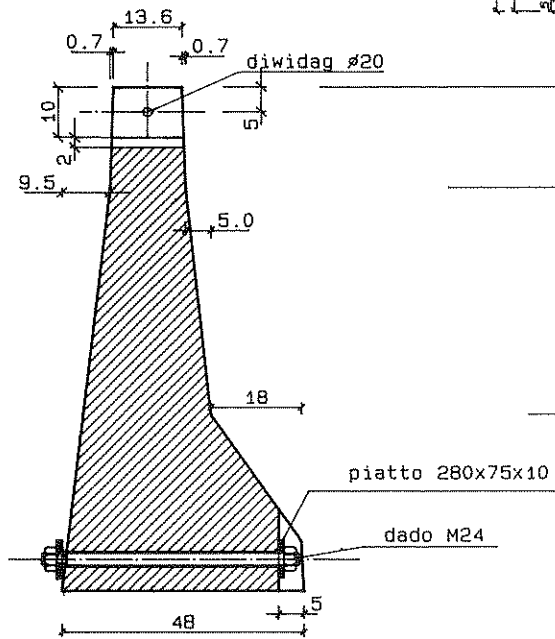


VISTA DALL'ALTO

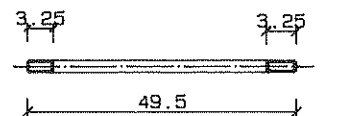


VISTE DELLE TESTATE

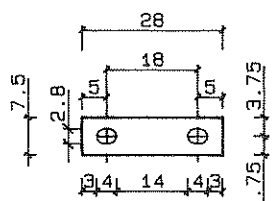
VISTA SUL GIUNTO



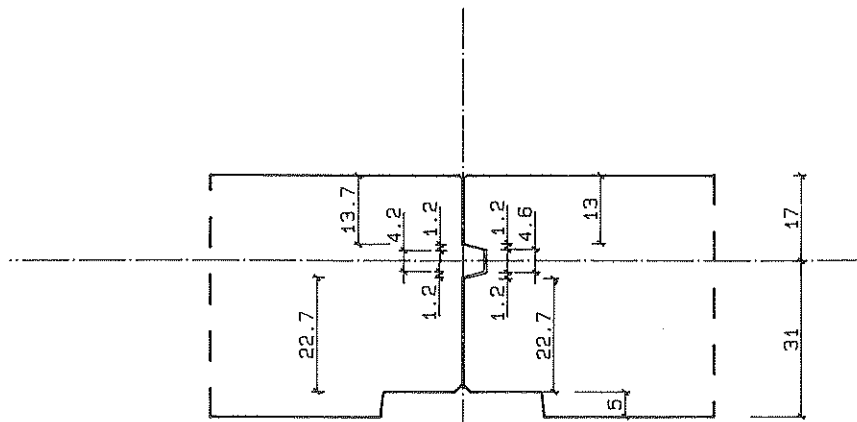
SEZIONE
IN MEZZERIA



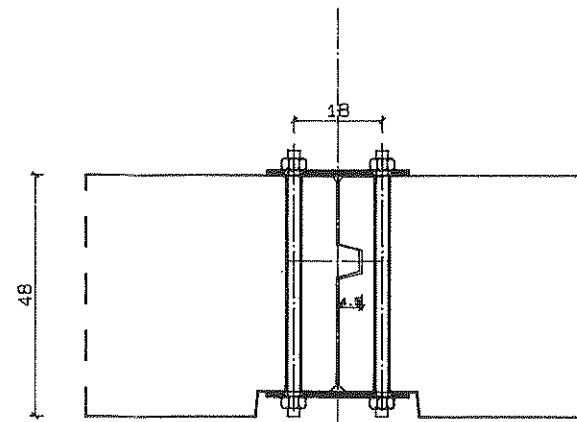
PARTICOLARE BARRA
(estremita' filettate M24)



**PARTICOLARE PIATTO
DI UNIONE ELEMENTI
280x75x10**

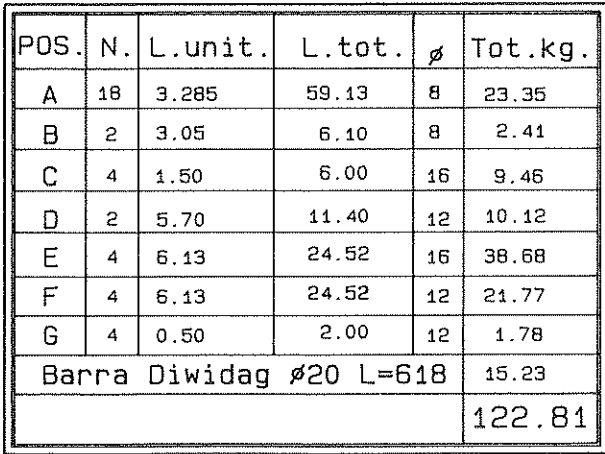


PARTICOLARE SUL NODO

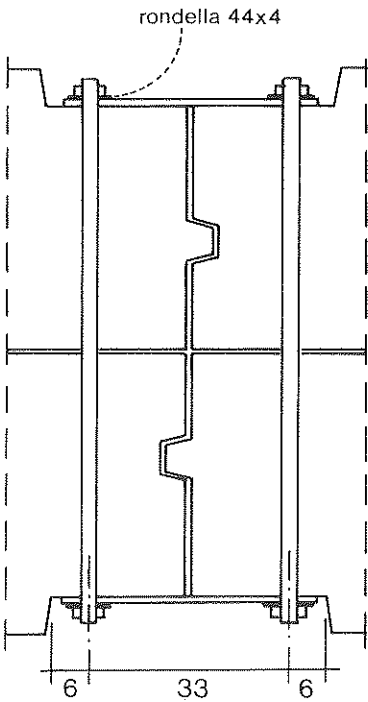
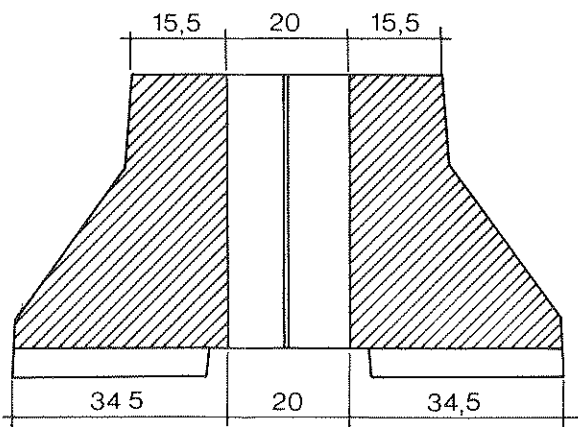
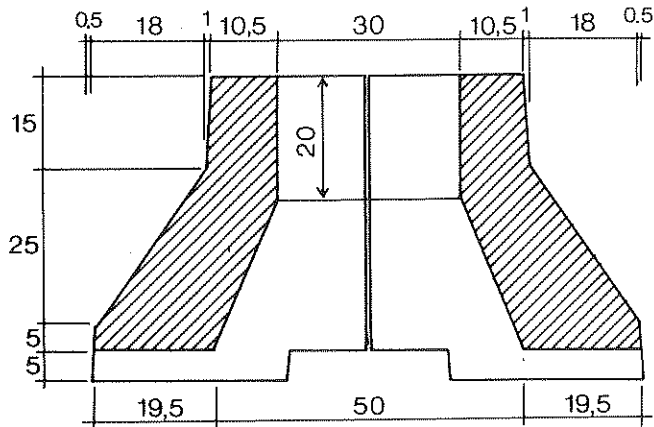
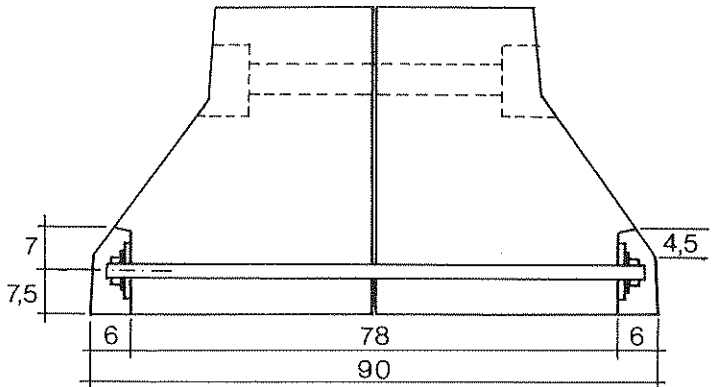
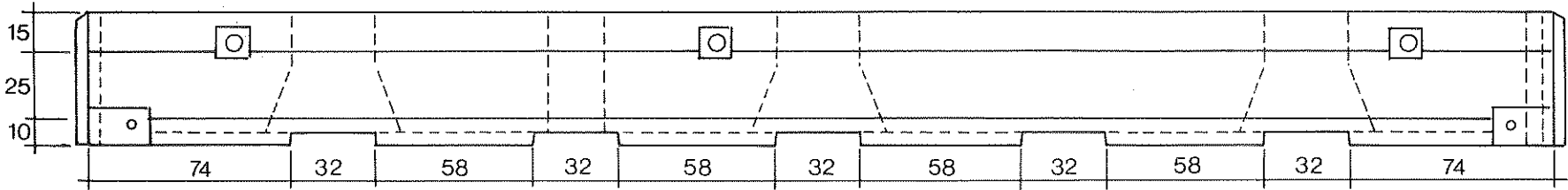
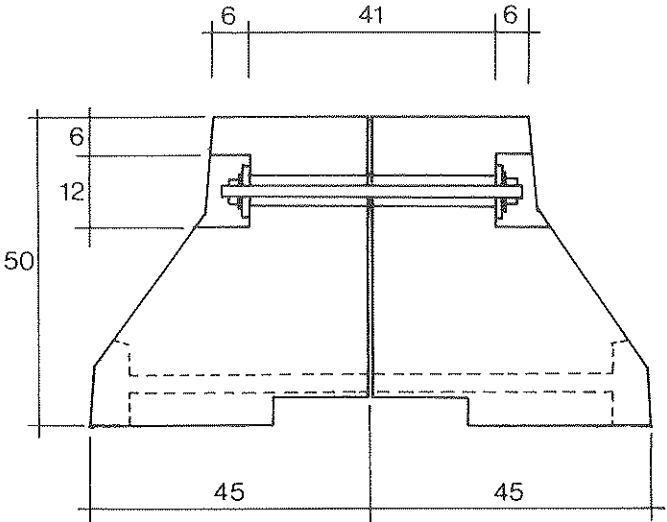
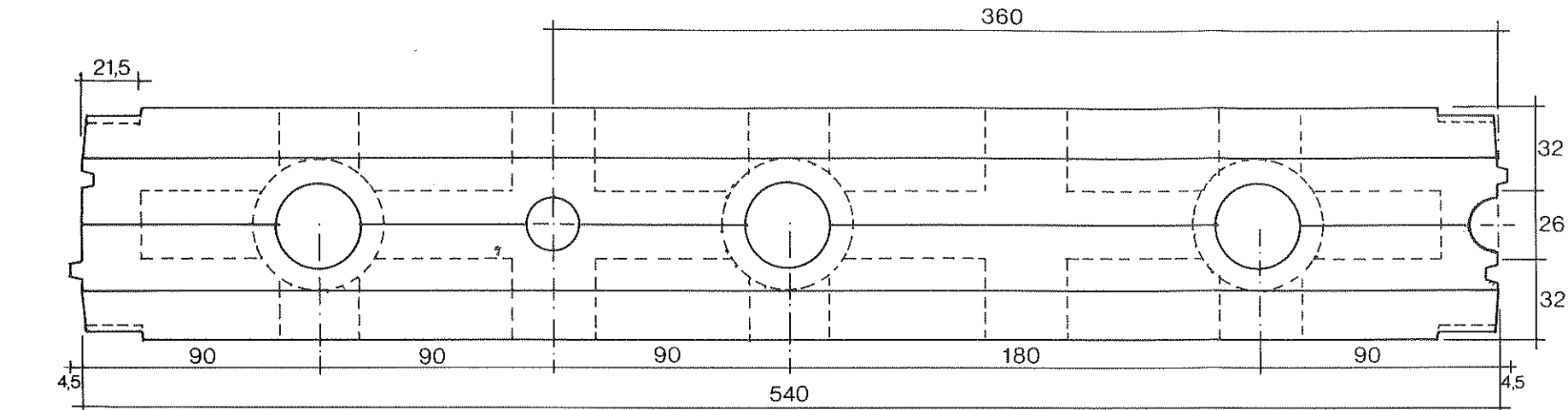


SEZIONE AL PIEDE

ARMATURA

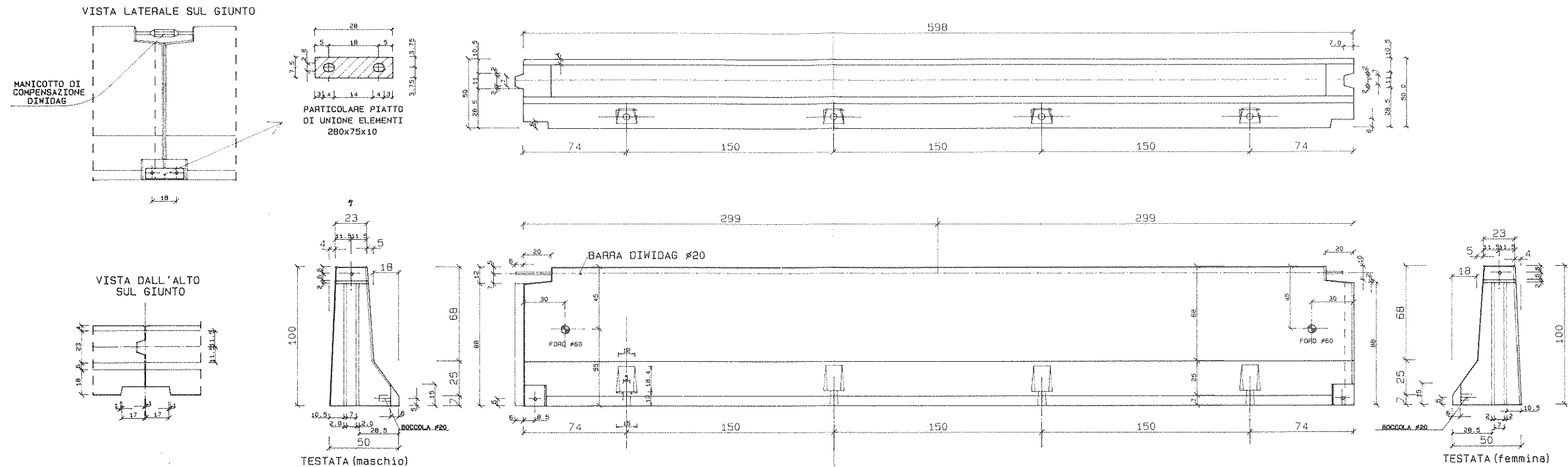


BARRIERE A DOPPIA LAMA CONTRAPPOSTA
con zoccolo New Jersey e vani fioriere

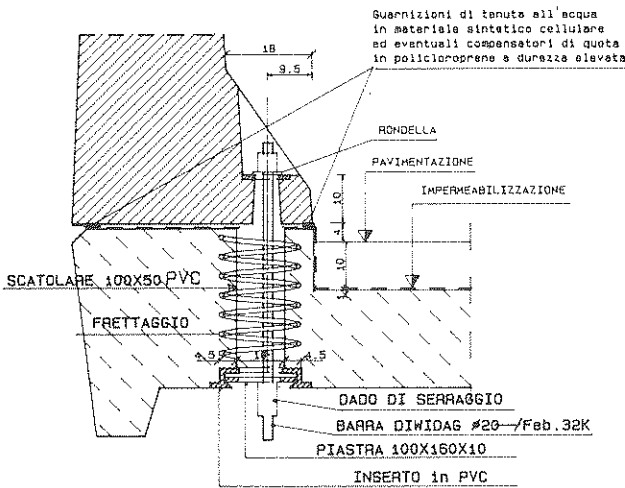


BORDO VIADOTTO
senza mancorrente, h = 100

CARPENTERIA

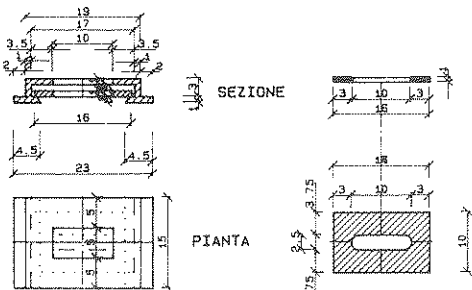


FISSAGGIO SU VIADOTTI
DI NUOVA COSTRUZIONE

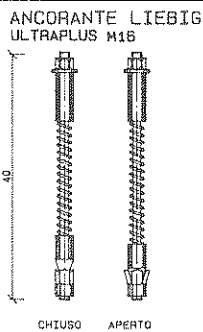
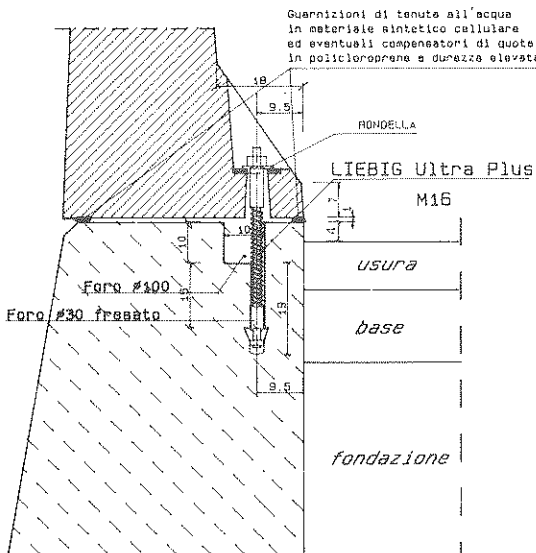


INSERTO IN PVC

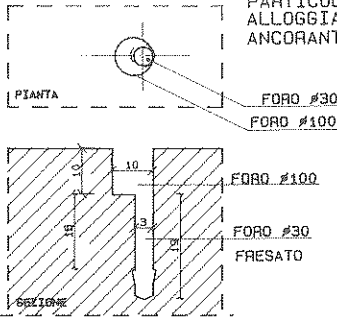
PIASTRA IN ACCIAIO



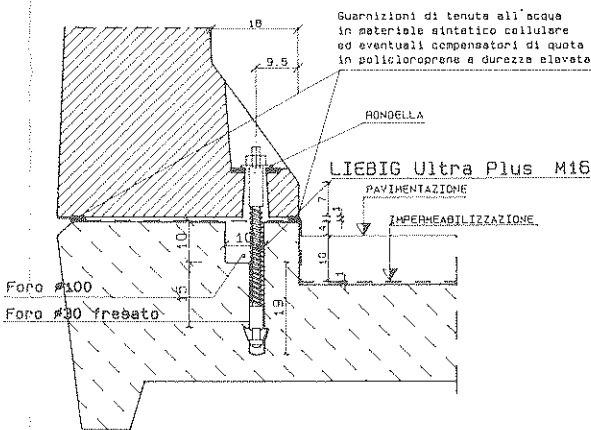
FISSAGGIO SU MURO C.T.
DI NUOVA E VECCHIA COSTRUZIONE



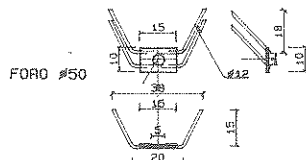
PARTICOLARE ALLOGGIAMENTO ANCORANTE



FISSAGGIO SU VIADOTTI
DI NUOVA E VECCHIA COSTRUZIONE

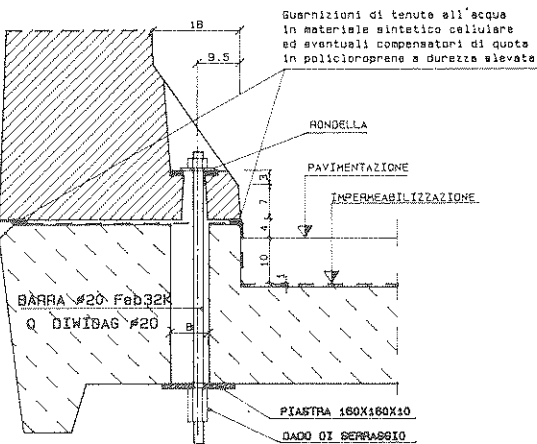


PARTICOLARE PIATTO 150x100x10

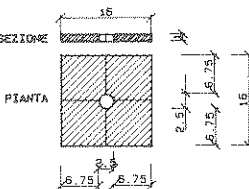


(piatto e armature zincate)

FISSAGGIO SU VIADOTTI
DI VECCHIA COSTRUZIONE

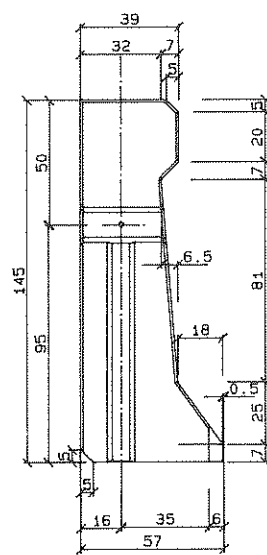


PARTICOLARE PIASTRA 160x160x10

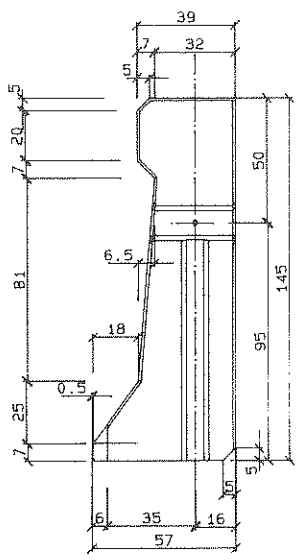
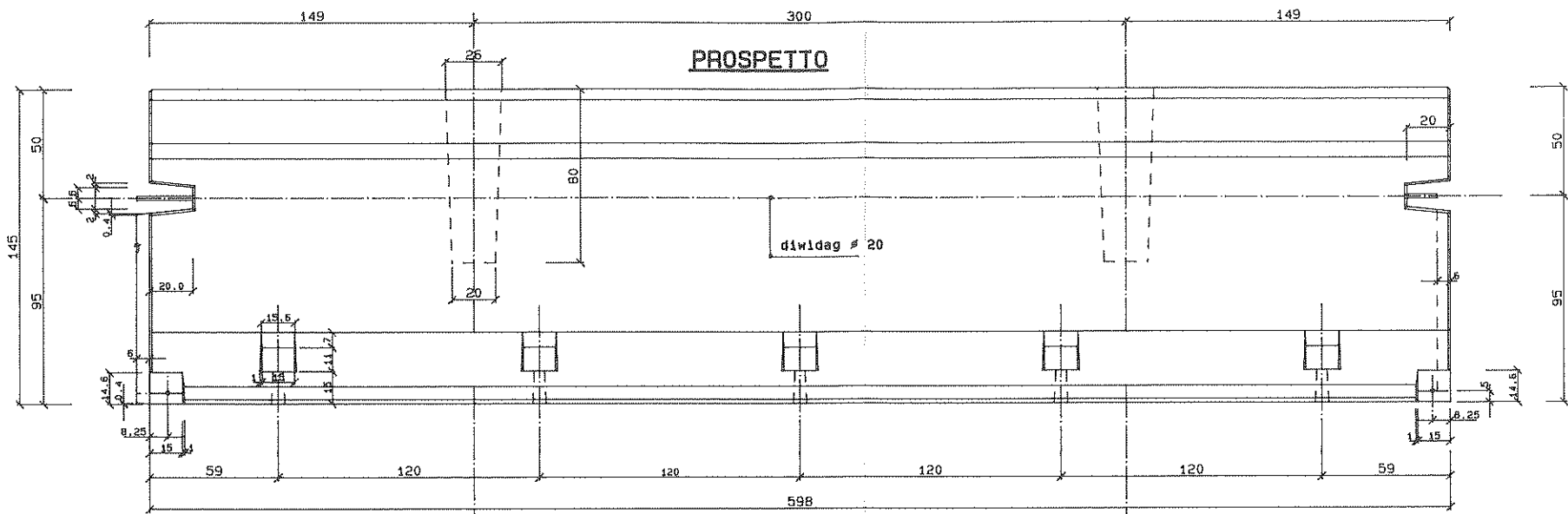


BORDO VIADOTTO
supporto pannello fonoassorbente

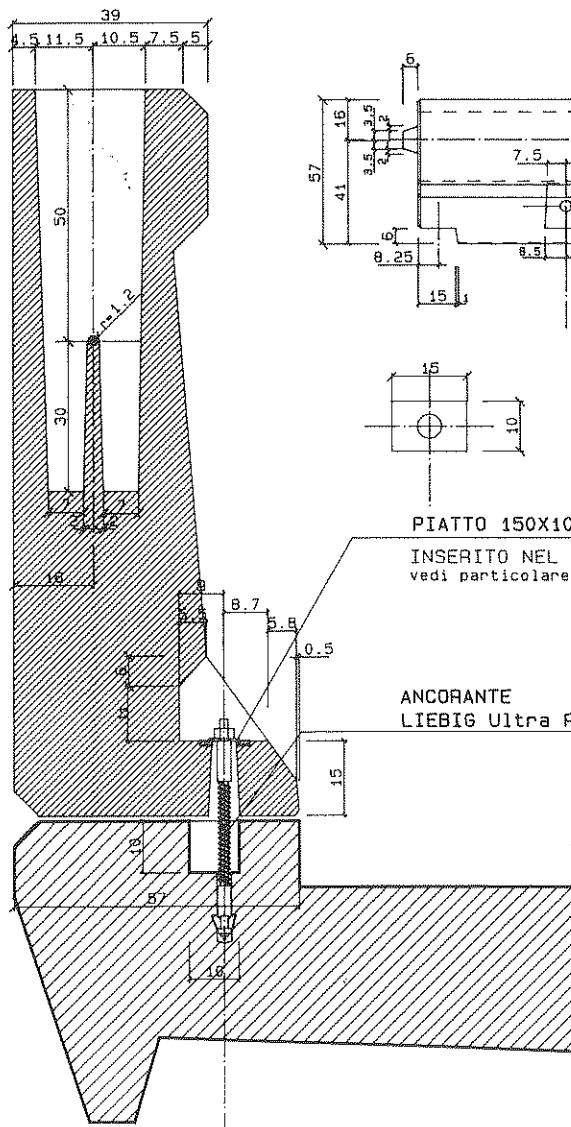
CARPENTERIA



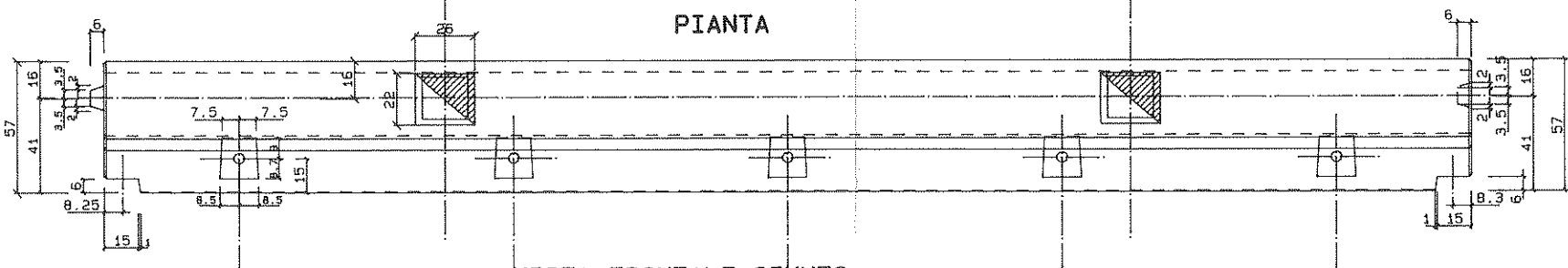
TESTATA (maschio)



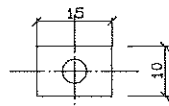
TESTATA (femina)



SEZIONE

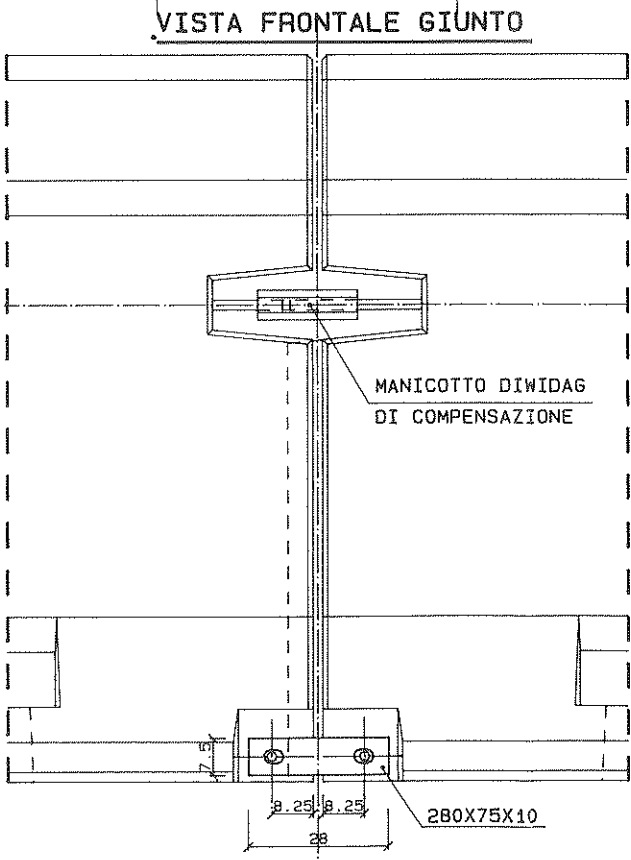


PIANTA



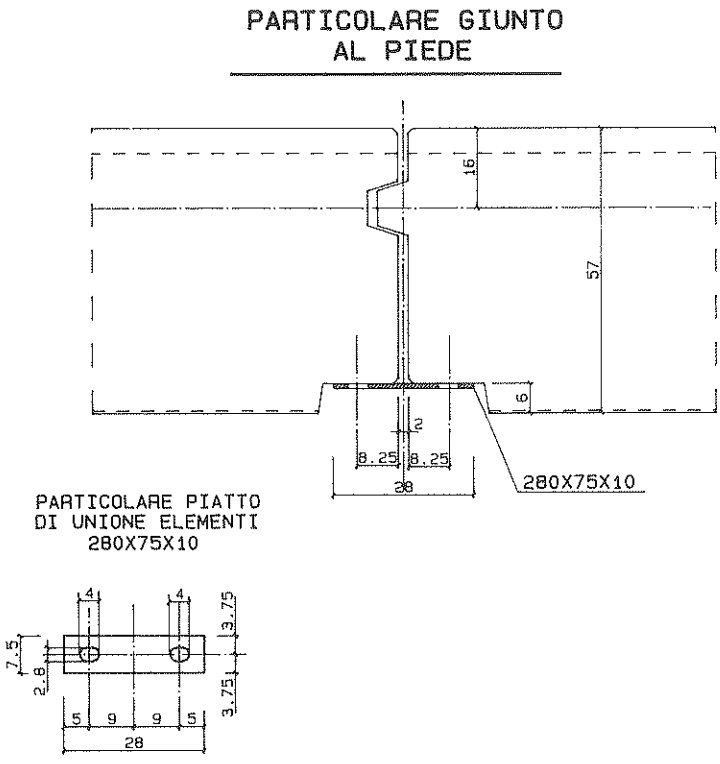
PIATTO 15X10X10
INSERITO NEL C.L.S.
vedi particolare su armatura

ANCORANTE
LIEBIG Ultra Plus M16



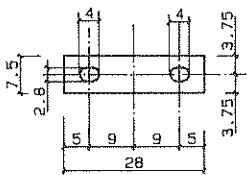
VISTA FRONTALE GIUNTO

MANICOTTO DIWIDAG
DI COMPENSAZIONE



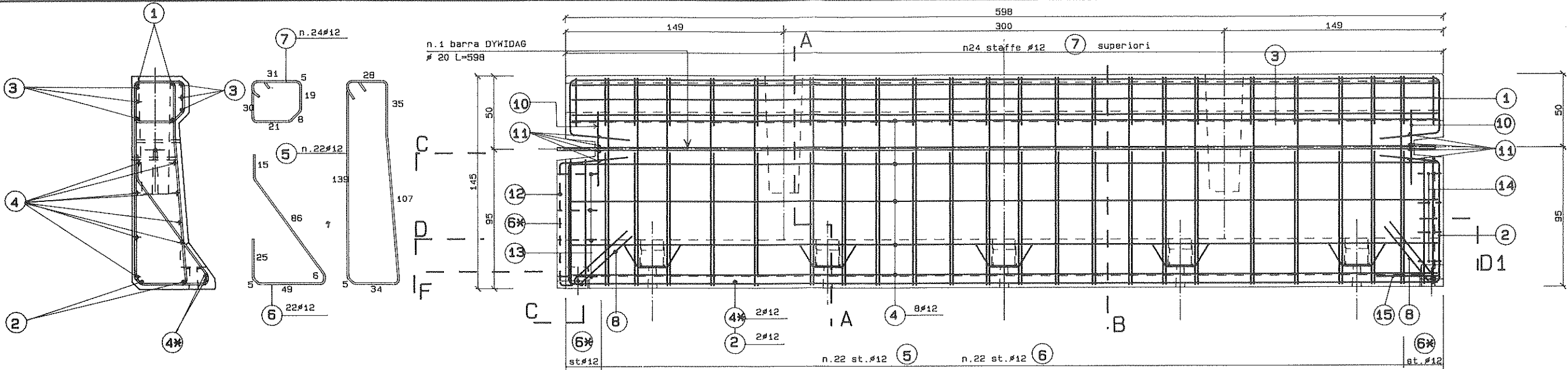
PARTICOLARE GIUNTO
AL PIEDE

PARTICOLARE PIATTO
DI UNIONE ELEMENTI
280X75X10

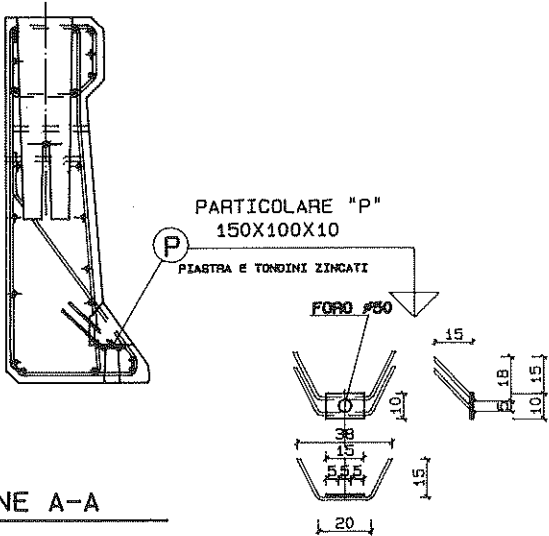


BORDO VIADOTTO
supporto pannello fonoassorbente

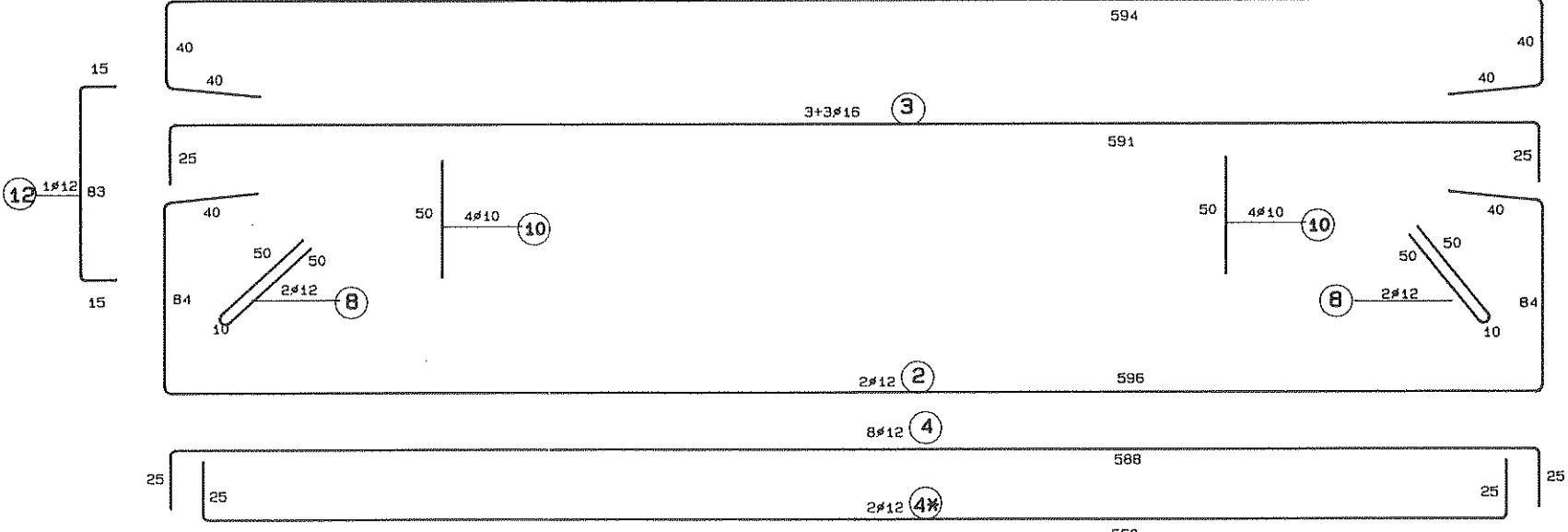
ARMATURA



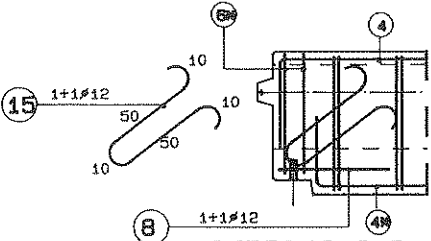
SEZIONE B-B



SEZIONE A-A



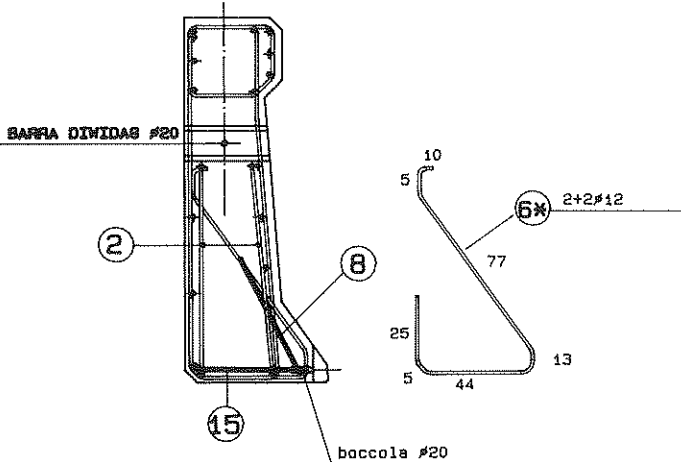
SEZIONE D-D



SEZIONE F-F

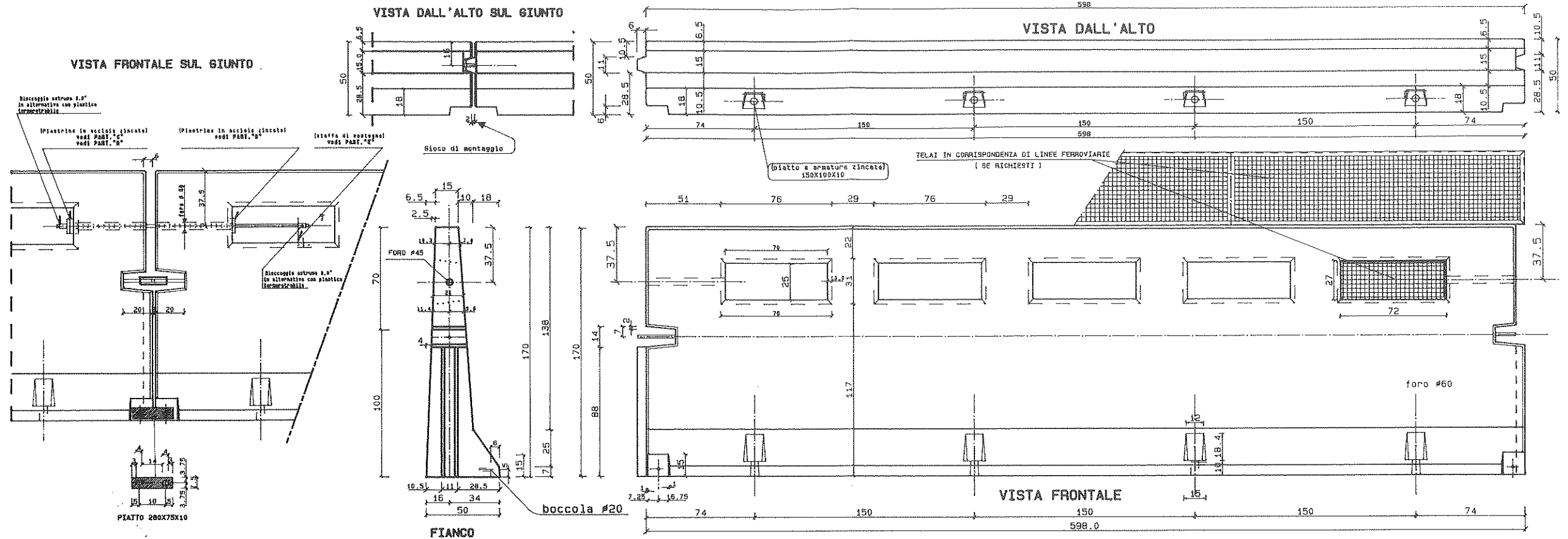
SEZIONE C-C

SEZIONE D1-D1

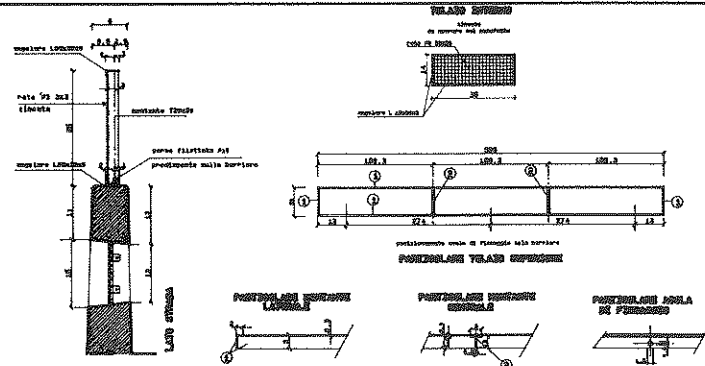


SEZIONE E-E

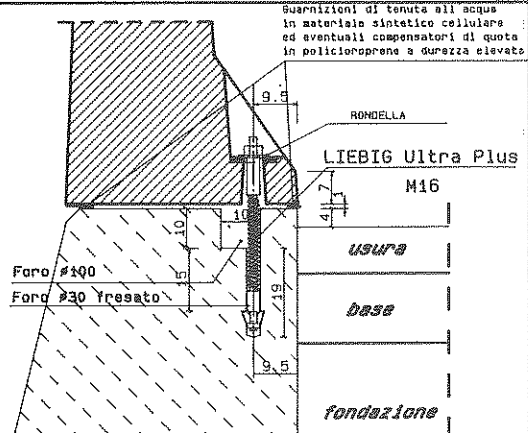
PDS.	Ø	N.	L. unit.	L. tot.	TOTALI
1	12	2	7.54	15.08	13.39
2	12	2	6.38	12.76	14.88
3	16	6	6.41	38.46	60.68
4	12	8	6.38	51.04	45.32
4*	12	2	6.10	12.20	10.83
5	12	2	3.78	7.56	73.85
5*	12	2	1.86	3.72	35.33
6*	12	4	1.79	7.15	6.35
7	12	24	1.44	34.56	35.80
8	12	4	1.10	4.40	3.90
10	10	8	0.50	4.00	3.08
11	10	8	0.55	4.40	2.71
12	12	1	1.13	1.13	1.00
13	10	4	0.30	1.20	0.74
14	10	4	1.07	4.28	2.64
15	12	2	1.30	2.60	2.31
16	dywidag	#20 l=598			14.75
P	Piastre	150x100x10 zincate			
B	Baccole	#20 n.2			328.56



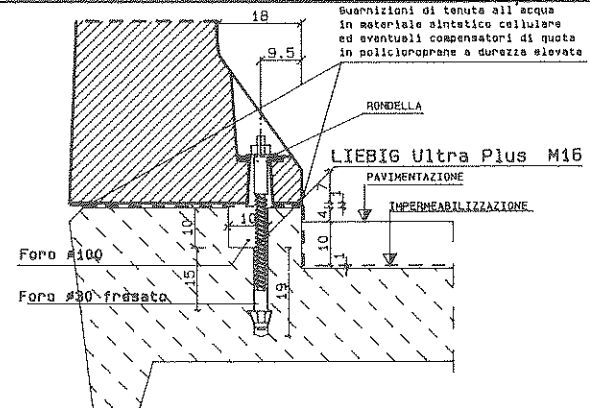
SISTEMAZIONE IN CORRISPONDENZA DI LINEE FERROVIARIE
- SE RICHIESTA -



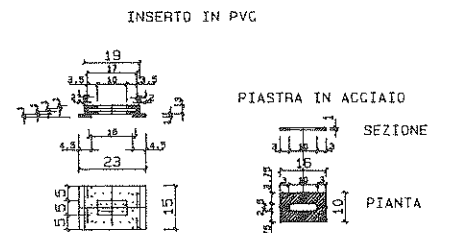
**FISSAGGIO SU MURO C. T.
DI NUOVA E VECCHIA COSTRUZIONE**



**FISSAGGIO SU VIADOTTI
DI NUOVA E VECCHIA COSTRUZIONE**

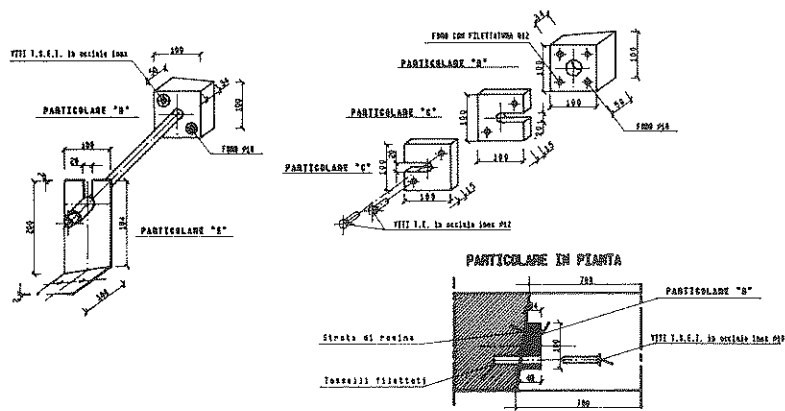


ACCESSORI

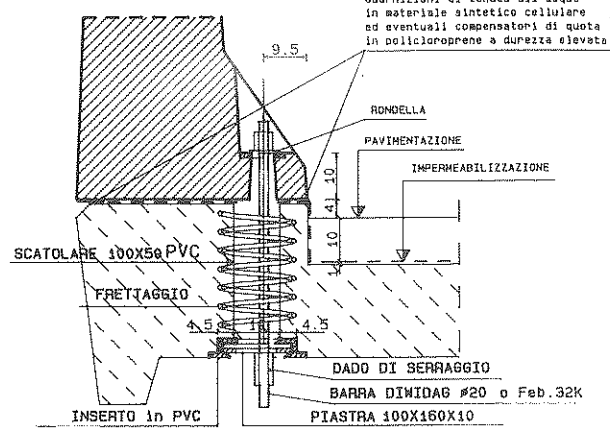


VALIDO PER ③

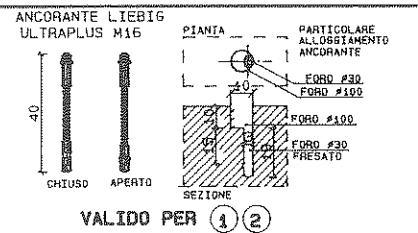
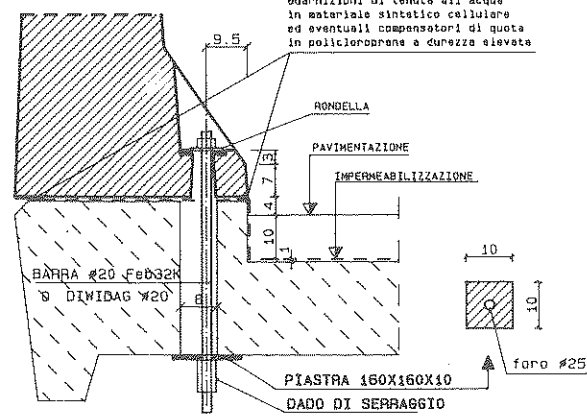
PARTICOLARI DEI SISTEMI DI FISSAGGIO ANTICADUTA



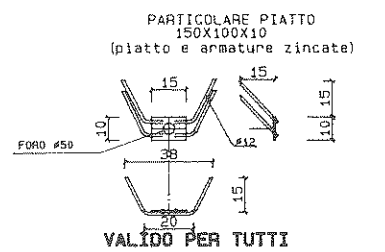
**FISSA6610 SU VIADOTTI
DI NUOVA COSTRUZIONE**



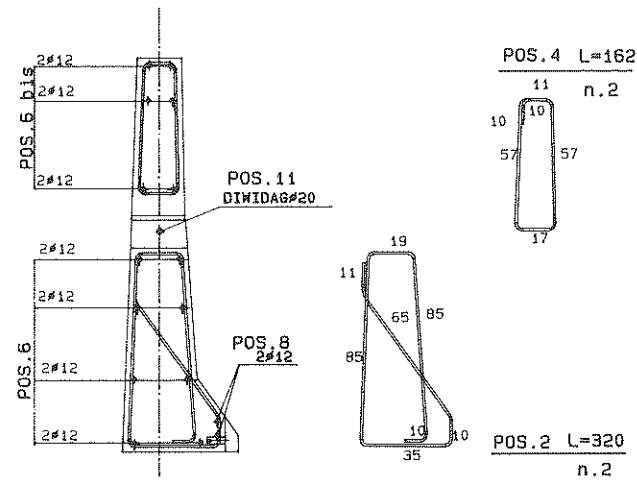
**FISSAGGIO SU VIADOTTI
DI VECCHIA COSTRUZIONE**



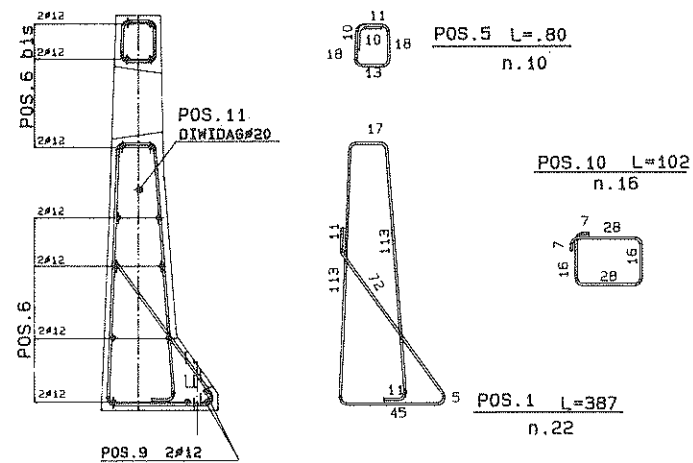
VALIDO PER ① ②



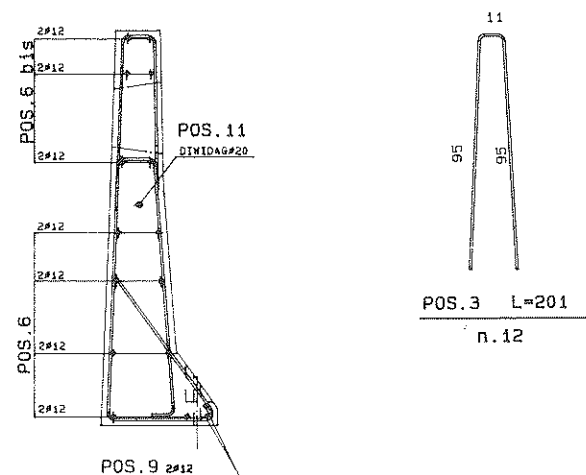
VALIDO PER TUTTI



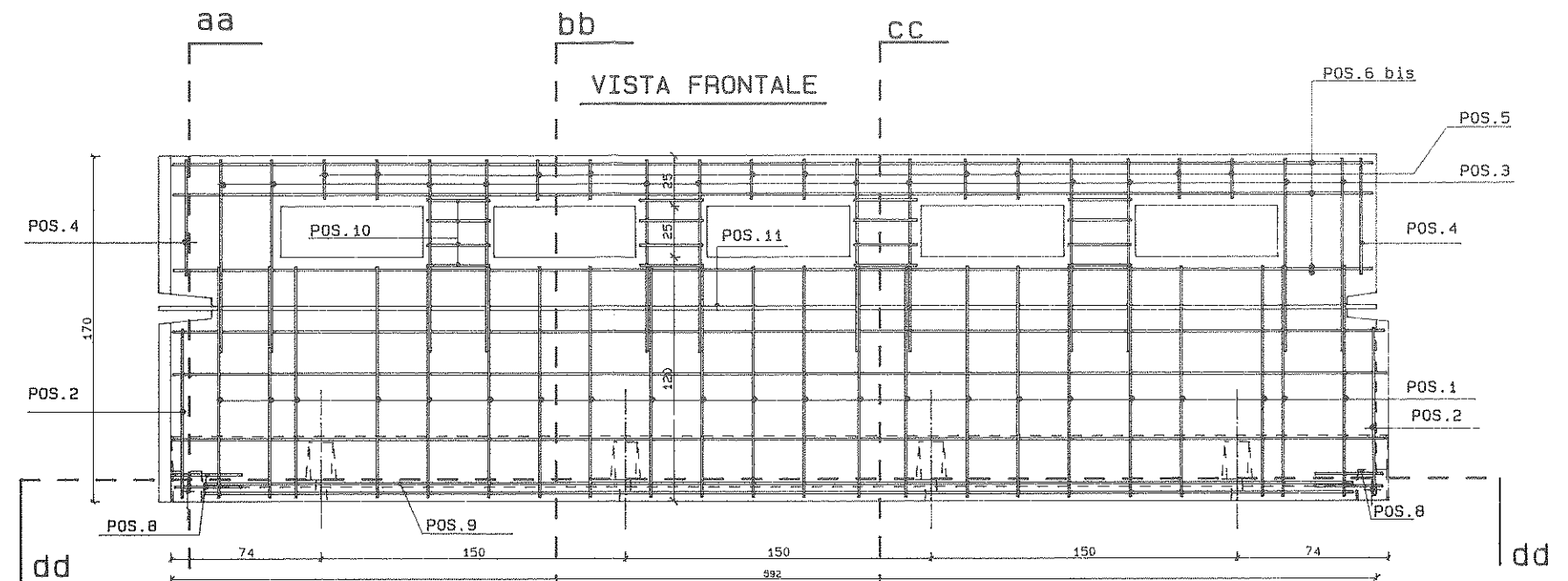
SEZIONE aa



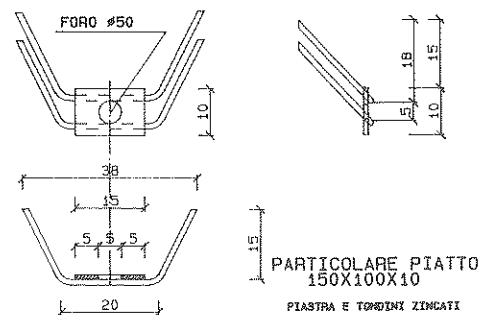
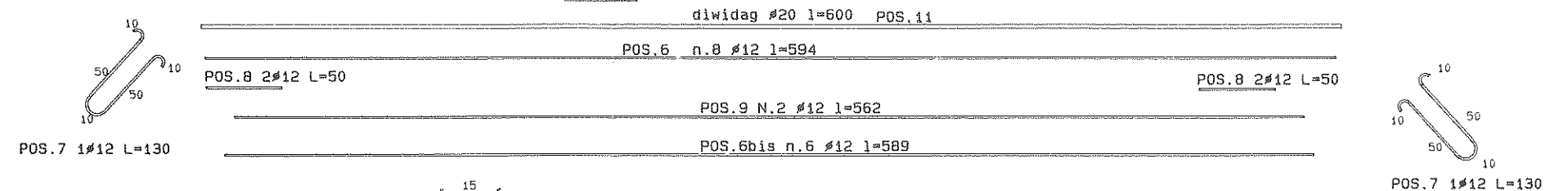
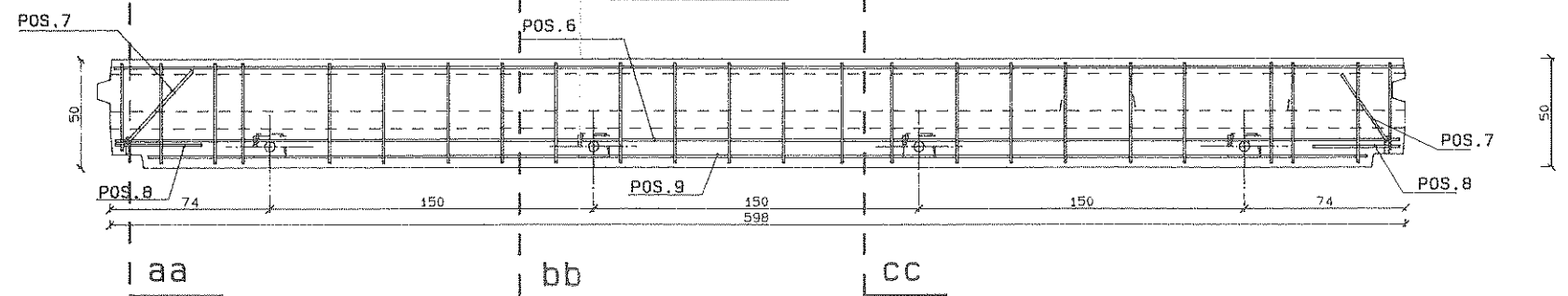
SEZIONE bb



SEZIONE CC



SEZIONE dd

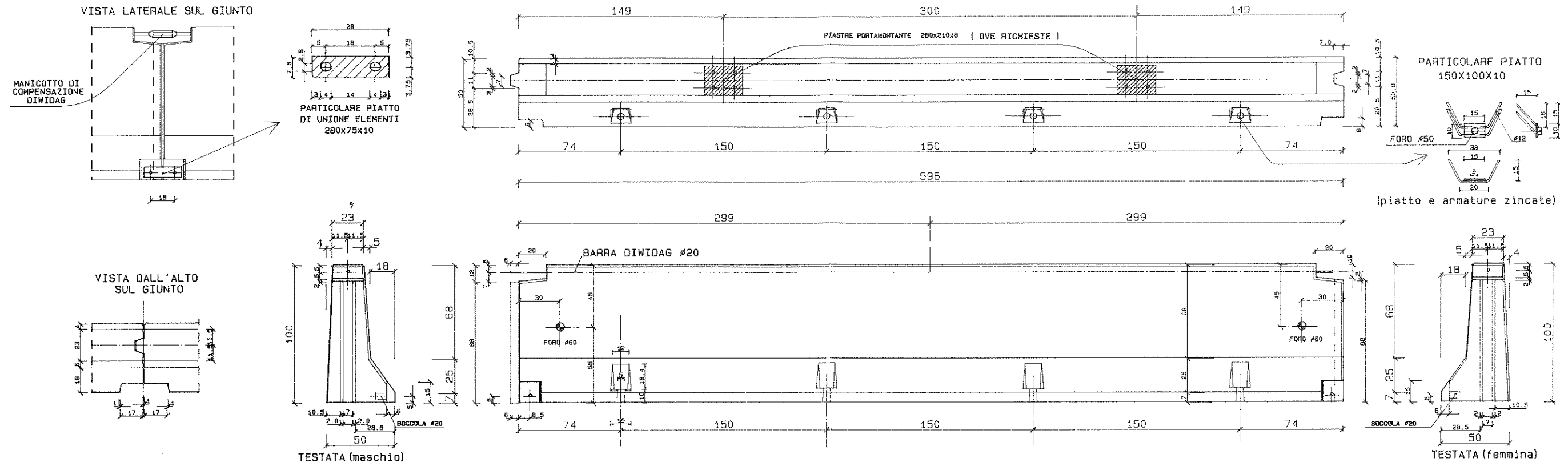


POSIZIONE	N	Ø	L unit.	L tot.	KG.unit.	KG.TOTALE
POS. 1	22	10	3.87	85.14	52.53	190.75
POS. 2	2	10	3.20	6.40	3.94	
POS. 3	12	10	2.01	24.12	14.88	
POS. 4	2	10	1.62	3.24	2.00	
POS. 5	10	10	0.80	8.00	4.93	
POS. 6	8	12	5.94	47.52	42.19	
POS. 6bis	6	12	5.89	35.34	31.38	
POS. 7	2	12	1.30	2.60	2.30	
POS. 8	4	12	0.50	2.00	1.77	
POS. 9	2	12	5.62	11.24	9.98	
POS. 10	16	10	1.02	16.32	10.06	
POS. 11	1	20	6.00	6.00	14.79	
POS. 12	2	Boccola #20				
POS. 13	4	Piastre 150x100x10 zancate #12 l=100				

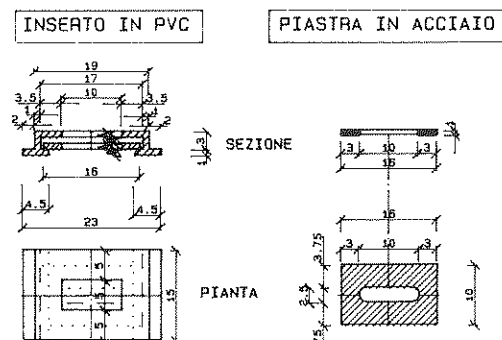
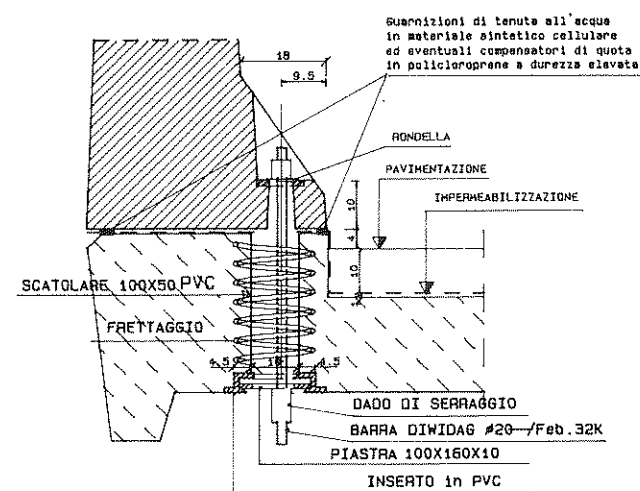
N.B.
OBLIGATORIO L'USO DI DISTANZIATORI
IN PLASTICA PER COPRIFERRO MINIMO 20mm.

BORDO VIADOTTO con mancorrente, h = 100

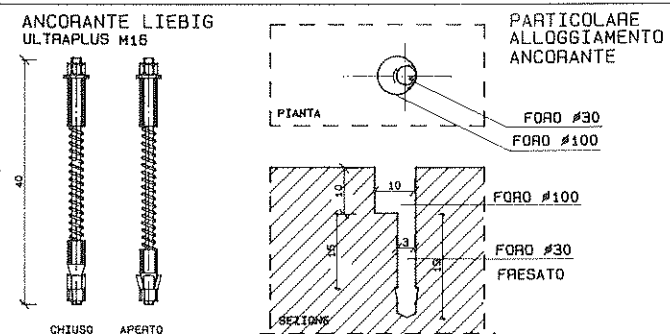
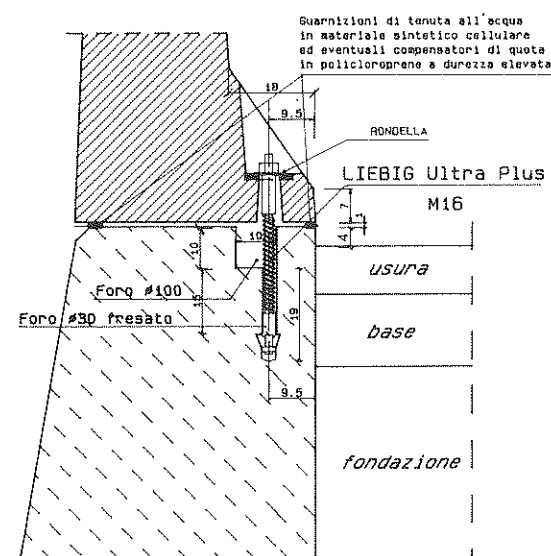
CARPENTERIA



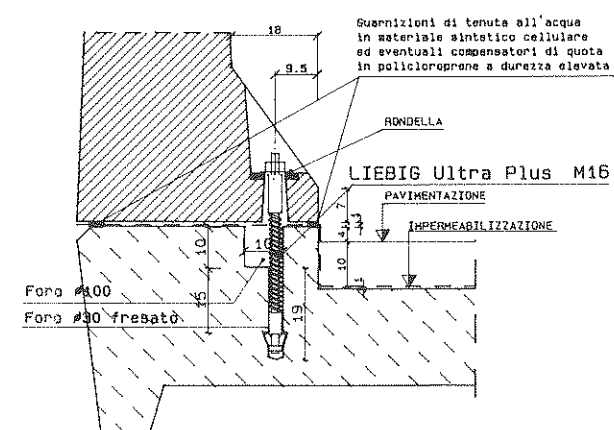
FISSAGGIO SU VIADOTTI DI NUOVA COSTRUZIONE



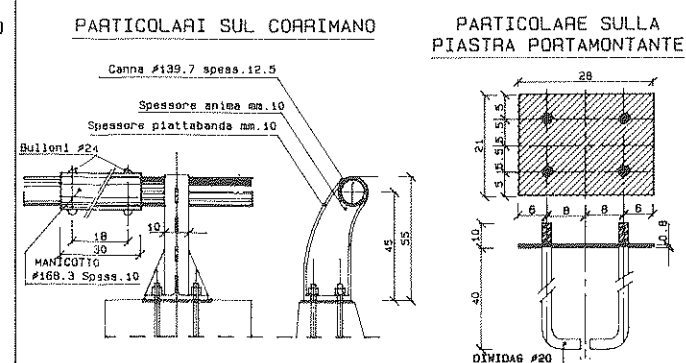
FISSAGGIO SU MURO C.T. DI NUOVA E VECCHIA COSTRUZIONE



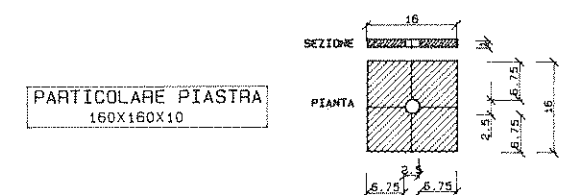
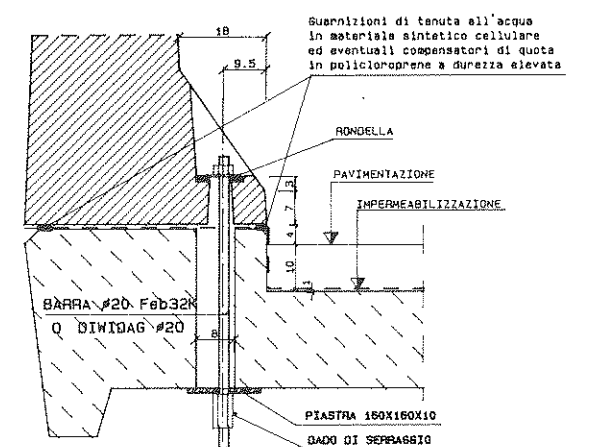
FISSAGGIO SU VIADOTTI DI NUOVA E VECCHIA COSTRUZIONE



"OVE RICHIESTO"



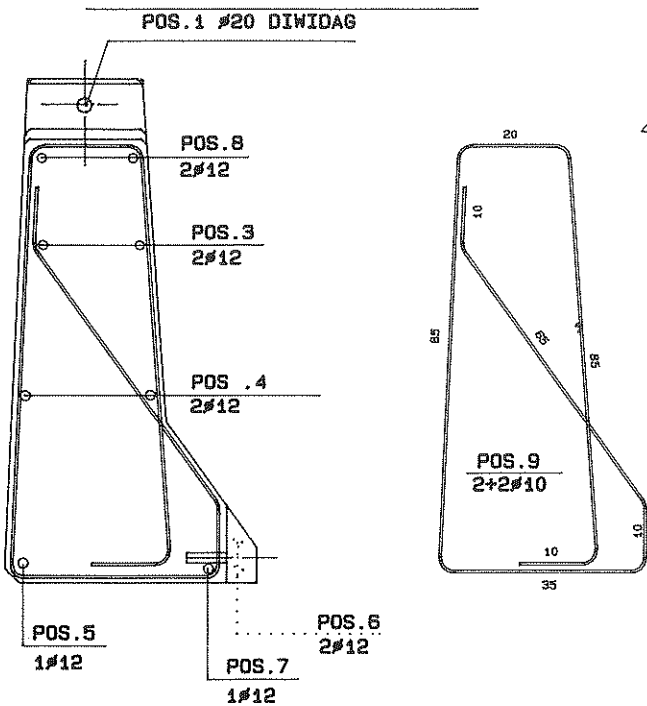
FISSAGGIO SU VIADOTTI DI VECCHIA COSTRUZIONE



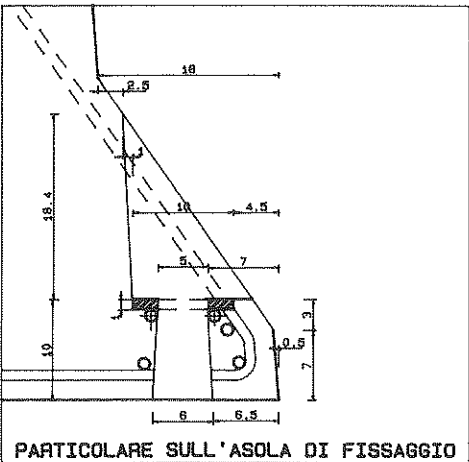
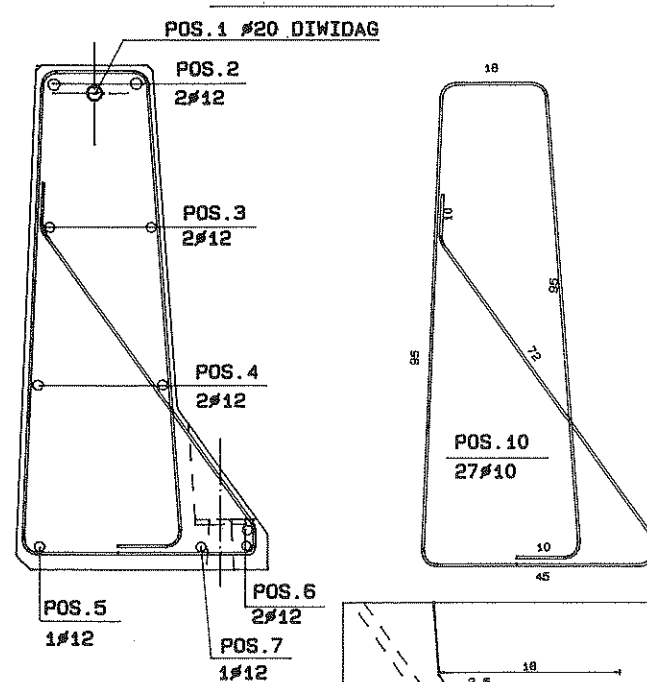
BORDO VIADOTTO
con mancorrente, h = 100

ARMATURA

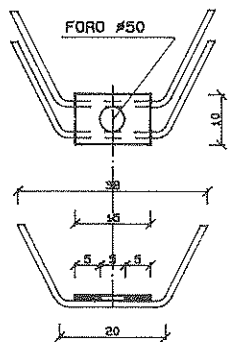
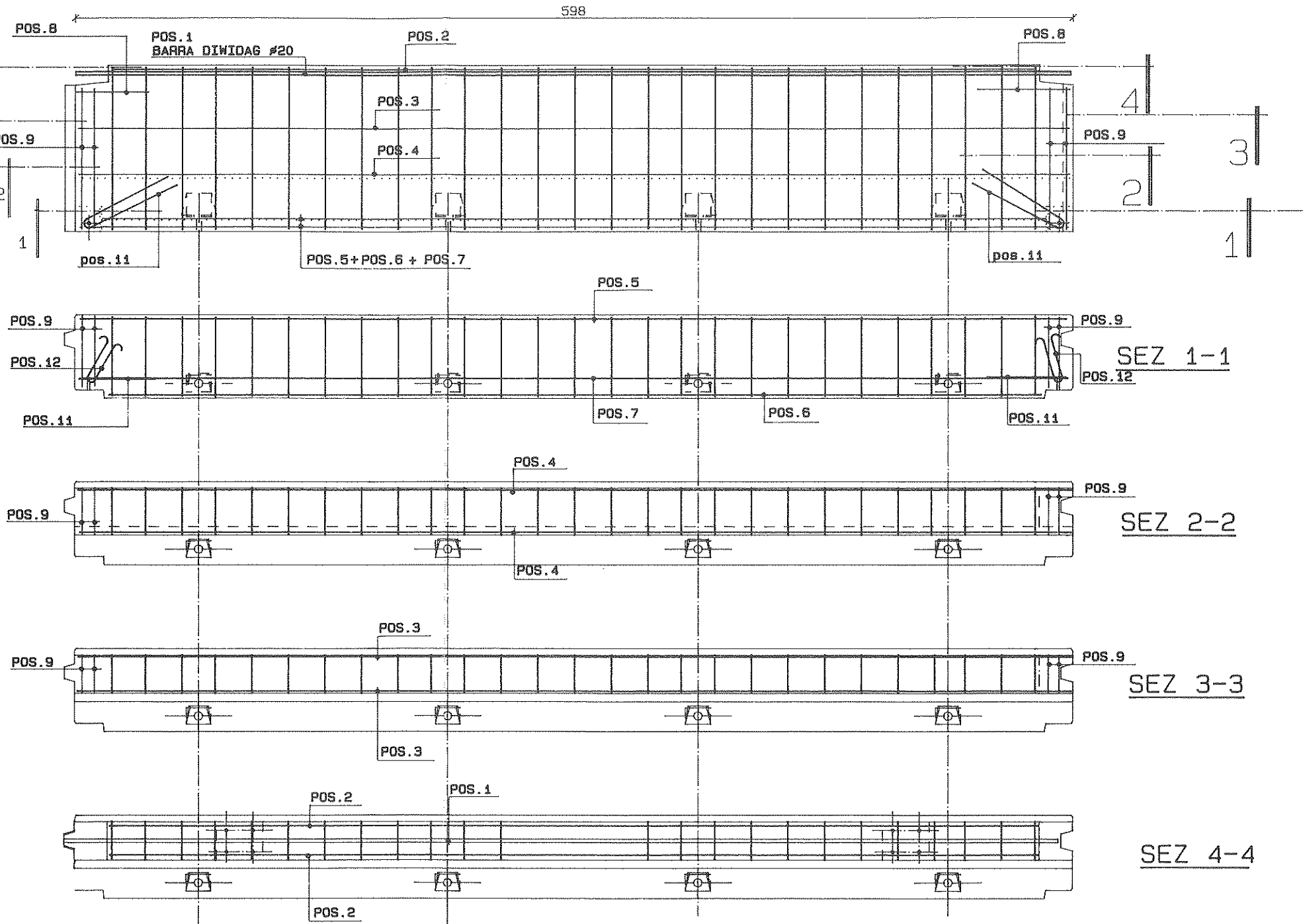
SEZIONE SULLA TESTATA



SEZIONE IN MEZZERIA



PARTICOLARE SULL'ASOLA DI FISSAGGIO



PARTICOLARE PIATTO
150X100X10
PIASTRA E TORNONE ZEDRATZ

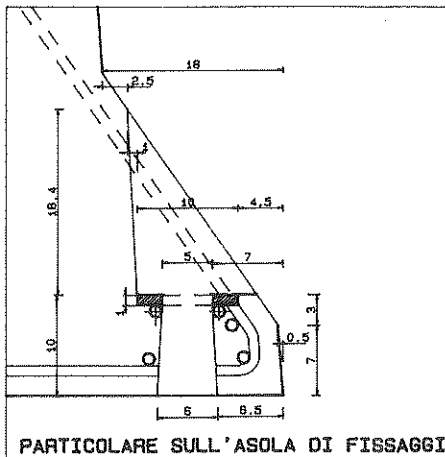
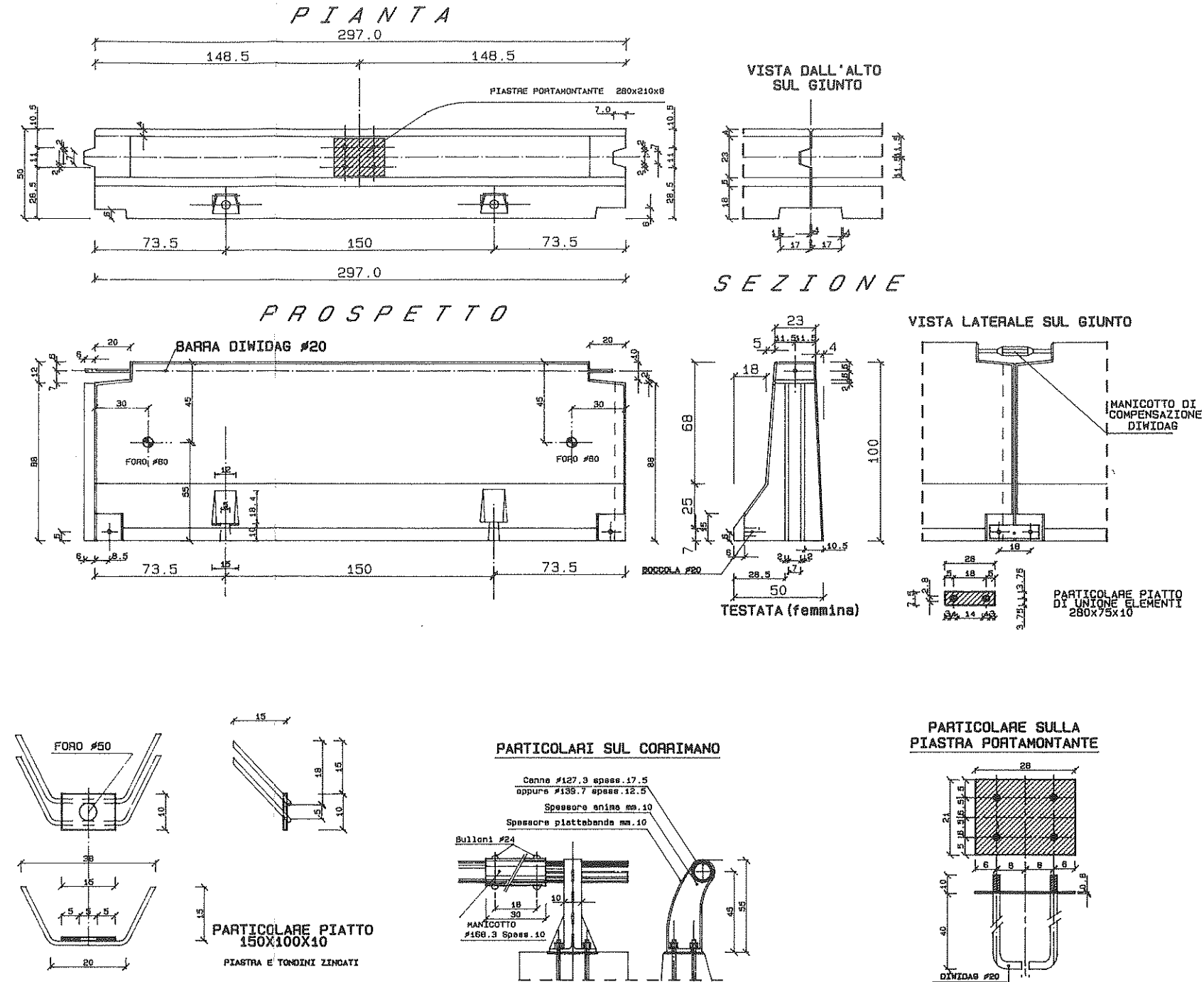
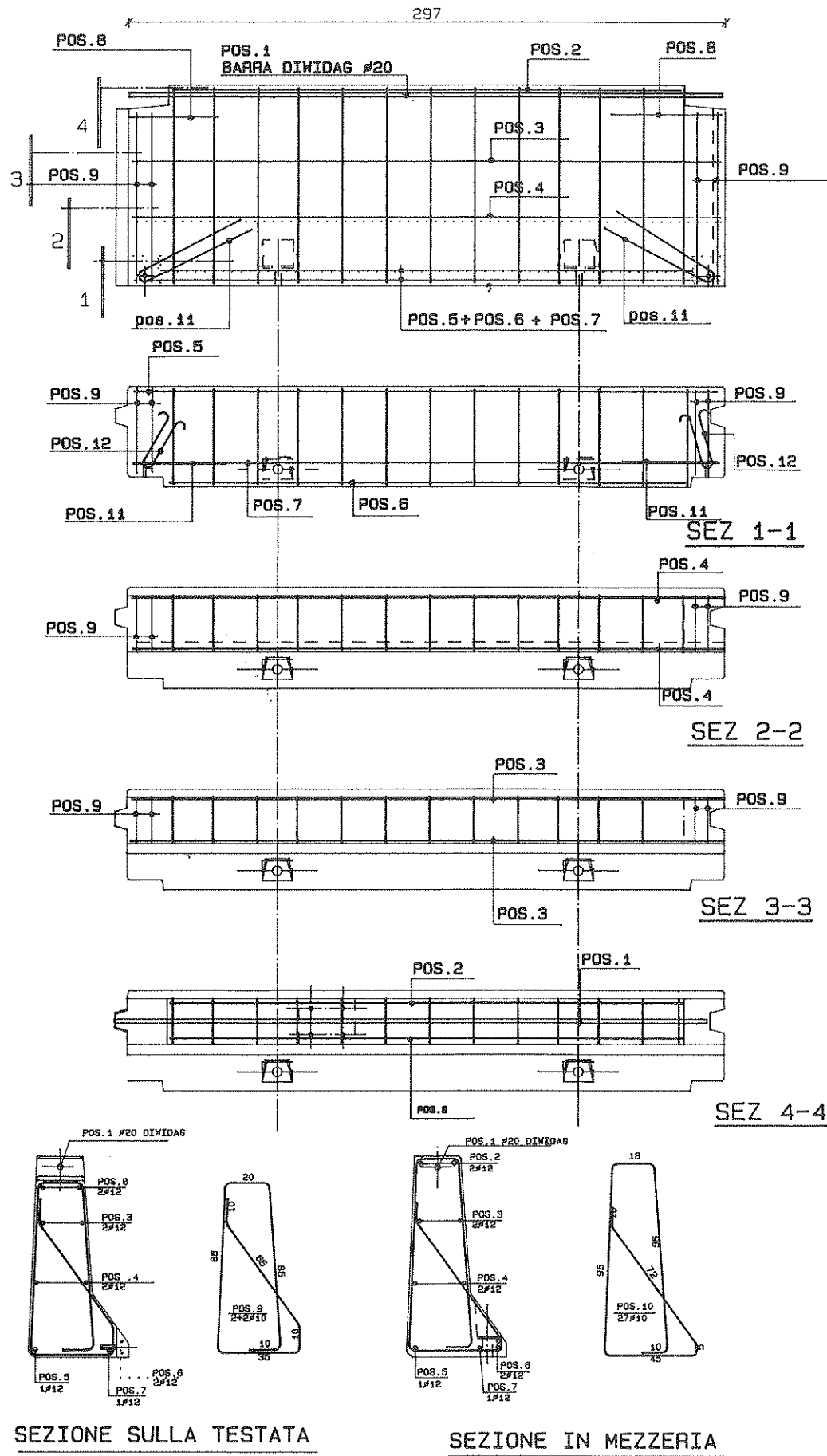
POSIZIONE	N.	#	L. unit.	L. tot.	KG. unit.	KG. TOTALE
POS. 1	1	20	5.97	5.97	14.75	
POS. 2	2	12	5.52	11.04	09.80	
POS. 3	2	12	5.93	11.86	10.53	
POS. 4	2	12	5.93	11.86	10.53	
POS. 5	1	12	5.93	5.93	5.26	
POS. 6	2	12	5.60	11.04	09.80	
POS. 7	1	12	5.93	5.93	5.26	
POS. 8	4	12	0.50	2.00	1.77	
POS. 9	4	10	3.20	12.80	7.89	
POS. 10	27	10	3.50	94.50	58.30	
POS. 11	2	12	1.10	2.20	1.95	
POS. 12	2	12	1.30	2.60	2.30	
POS. 13	2	Boccole #20				
POS. 14	4	Piastre 150x100x10 zancate #12 l=100				
POS. 15	2	Piastre 210x280x8 zancate #20 filettate				

N.B.
OBBLIGATORIO L'USO DI DISTANZIATORI
IN PLASTICA PER COPRIFERRO MINIMO 20mm.

138.14

BORDO VIADOTTO
con mancorrente, h = 100

CARPENTERIA E ARMATURA



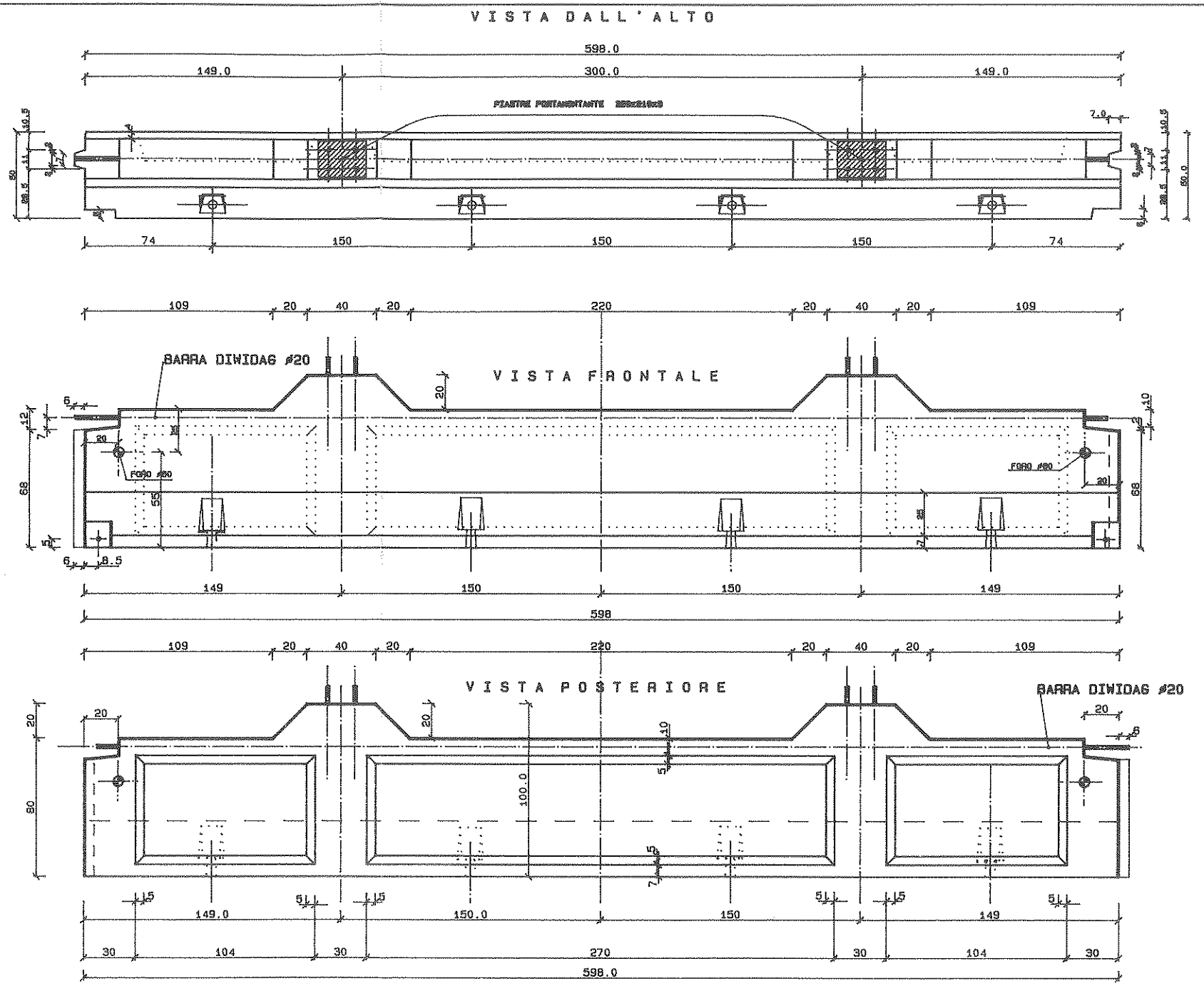
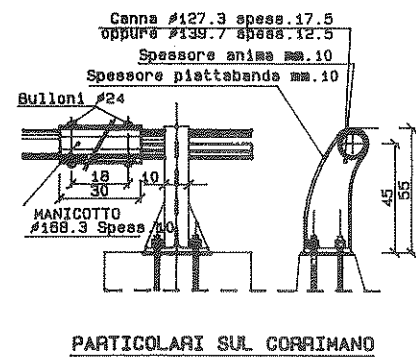
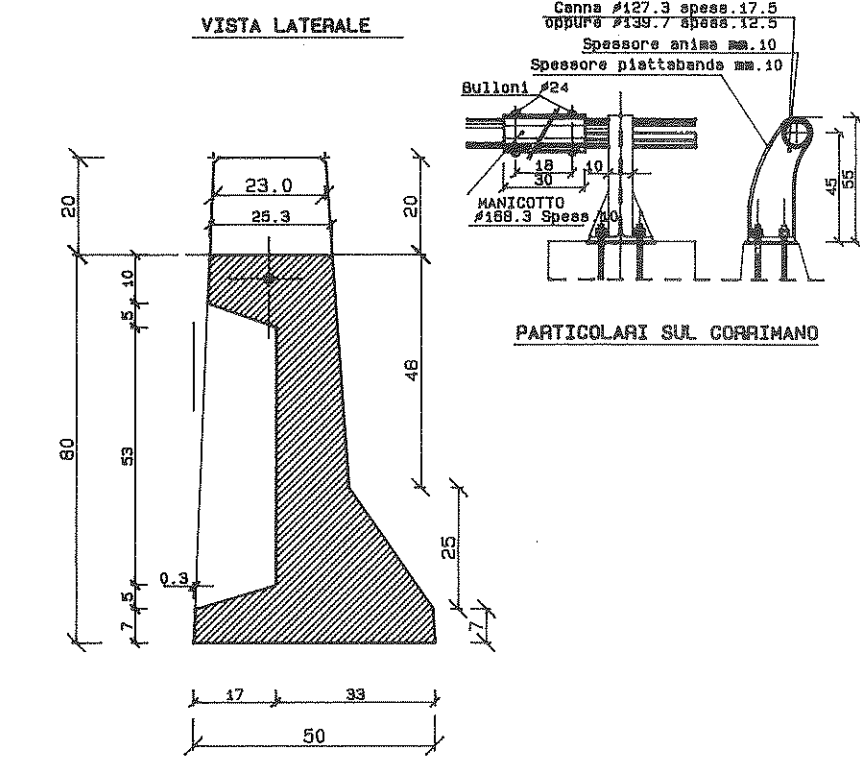
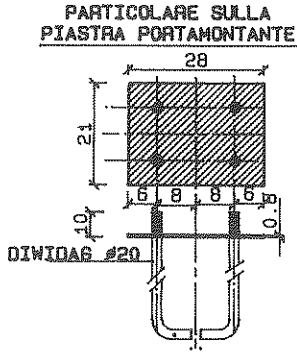
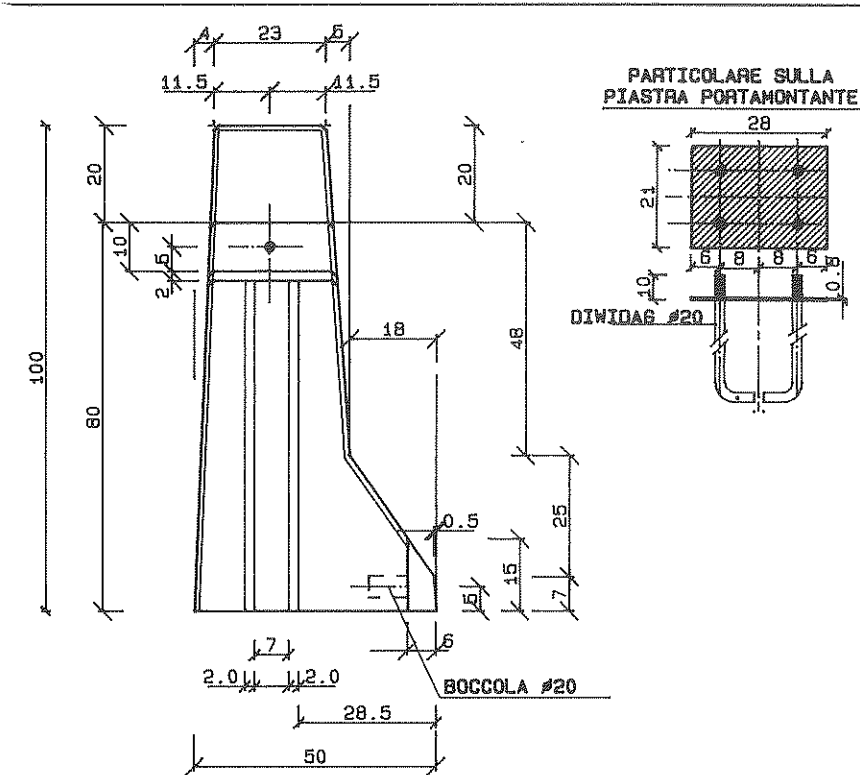
POSIZIONE	N.	#	L. unit.	L. tot.	KG. unit.	KG. TOTALE
POS. 1	1	20	295	295	7.27	
POS. 2	2	12	252	504	4.47	
POS. 3	2	12	290	580	5.15	
POS. 4	2	12	290	580	5.15	
POS. 5	1	12	290	290	2.57	
POS. 6	2	12	265	530	4.70	
POS. 7	1	12	290	290	2.57	
POS. 8	2	12	50	100	0.888	
POS. 9	4	10	320	1280	7.89	
POS. 10	13	10	350	4550	28.07	
POS. 11	2	12	110	220	1.95	
POS. 12	2	12	130	260	2.30	
POS. 13	2		Boccole #20			
POS. 14	4		Piastre 150x100x10 zancate #12 l=100			
POS. 15	1		Piastre 210x280x8 zancate #20 filettate			

L = 3 m.

N.B.
OBBLIGATORIO L'USO DI DISTANZIATORI
IN PLASTICA PER COPRIFERRO MINIMO 20mm.

BORDO VIADOTTO “PANORAMICA” con mancorrente, h = 100

CARPENTERIA



VISTA FRONTALE

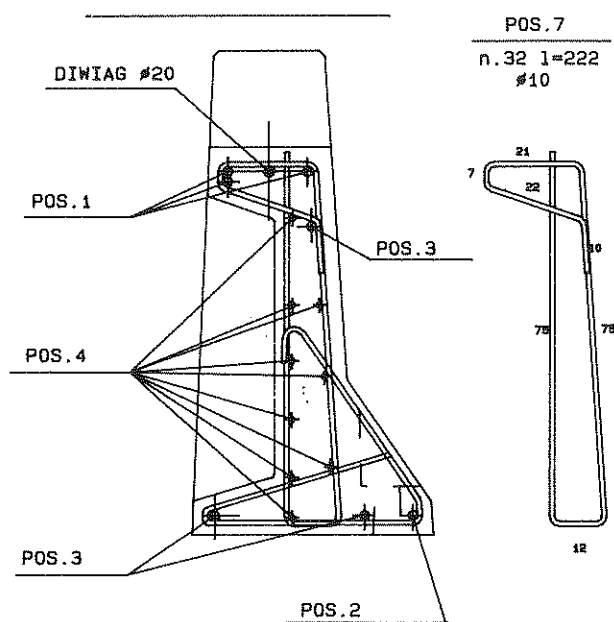
VISTA POSTERIORE

BORDO VIADOTTO "PANORAMICA" con mancorrente, h = 100

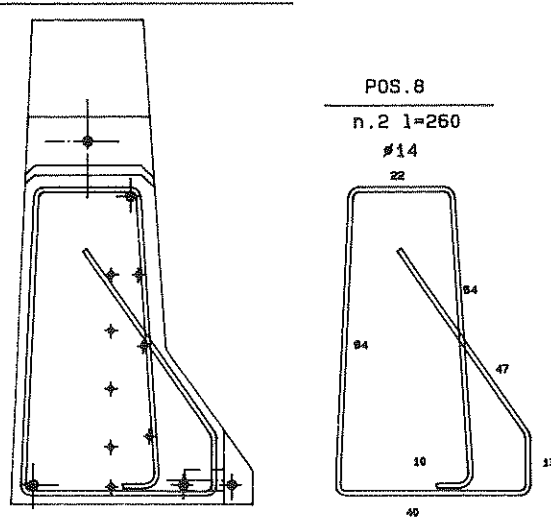
ARMATURA

POSIZIONE	N.	#	unit.	L.tot.	KG.unit.	KG.TOTALE
POS. 1	3	20	5.44	16.32	40.25	263.15
POS. 2	1	20	5.64	5.64	13.91	
POS. 3	3	20	5.94	17.82	43.95	
POS. 4	9	12	5.89	53.01	47.08	
POS. 5	4	14	1.60	6.40	7.73	
POS. 6	34	10	1.55	52.70	32.52	
POS. 7	28	10	2.22	62.16	38.35	
POS. 8	2	14	2.60	5.20	6.28	
POS. 9	2	14	3.15	6.30	7.61	
POS. 10	4	14	3.52	14.08	17.00	
POS. 11	6	10	1.04	6.24	3.85	
POS. 12	2	12	1.30	2.60	2.31	
POS. 13	2	12	1.30	2.60	2.31	
POS. 14	1	20	5.97	diwidaq	14.48	
POS. 15	2	Boccole #20				
POS. 16	4	Piastre 150x100x10 zancate #12 l=100				

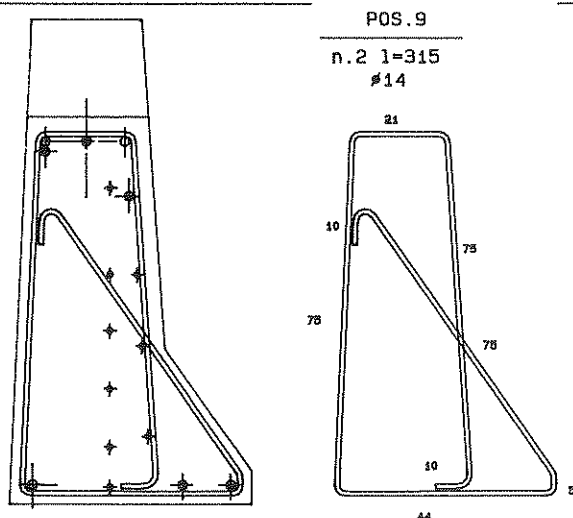
SEZIONE D-D



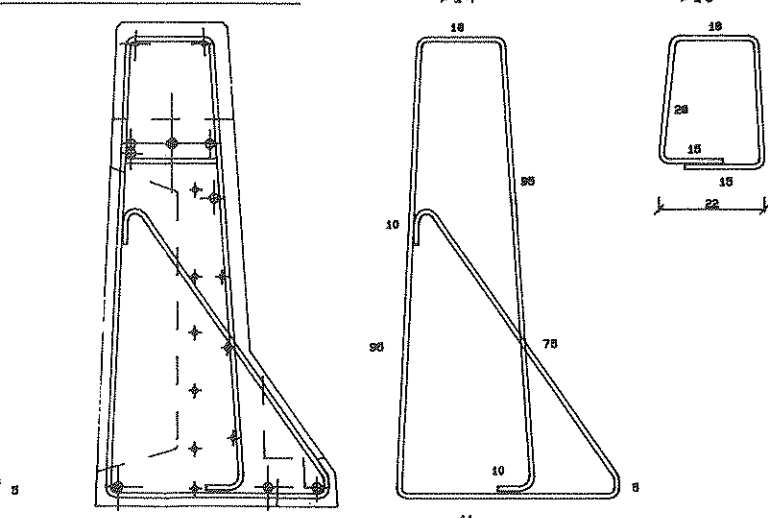
SEZIONE A-A



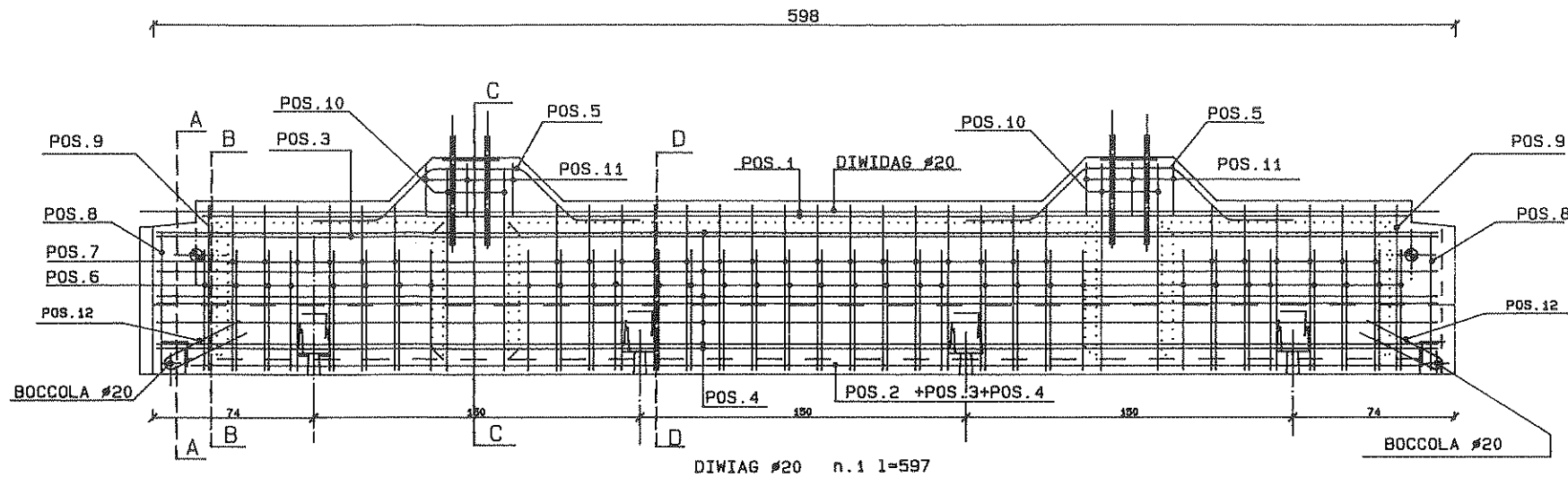
SEZIONE B-B



SEZIONE C-C



V I S T A F R O N T A L E

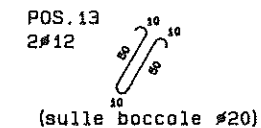
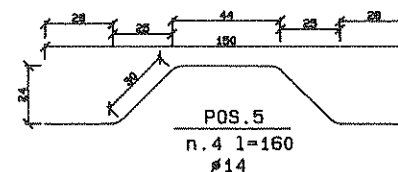
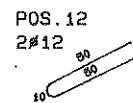


POS.1 n.3 Ø20 1=544

POS.3 n.3 Ø20 1=594

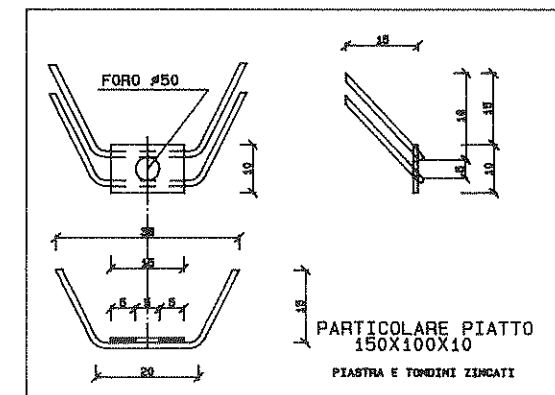
POS.2 n.1 Ø20 1=564

PDS.4 n.9 #12 1-589



POS.10
n.4 l=352
Ø14

POS. 11
n. 6 l=104
#10

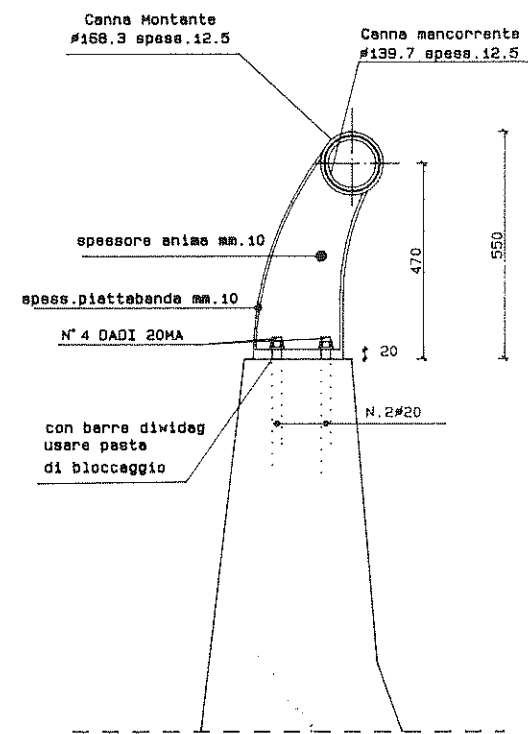


N. B.

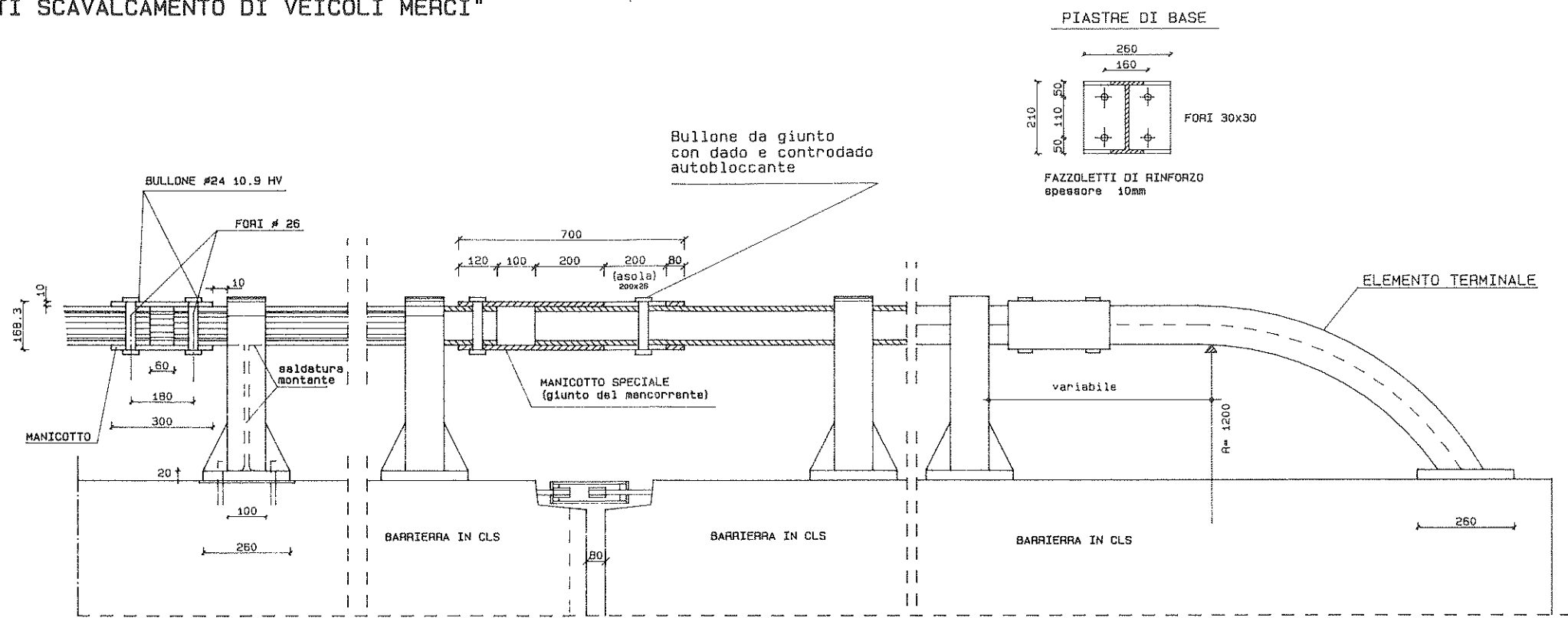
**OBLIGATORIO L'USO DI DISTANZIATORI
IN PLASTICA PER COPRIFERRO MINIMO 20mm.**

MANCORRENTE PER PARAPETTI NEW JERSEY

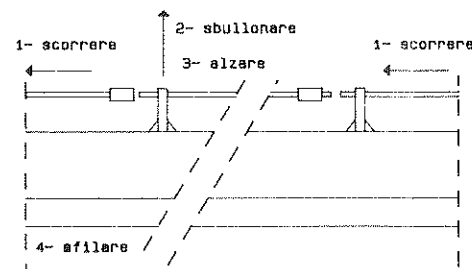
"TIPO AD ALTA RESISTENZA, ANTI SCAVALCAMENTO DI VEICOLI MERCI"



VISTA LATERALE

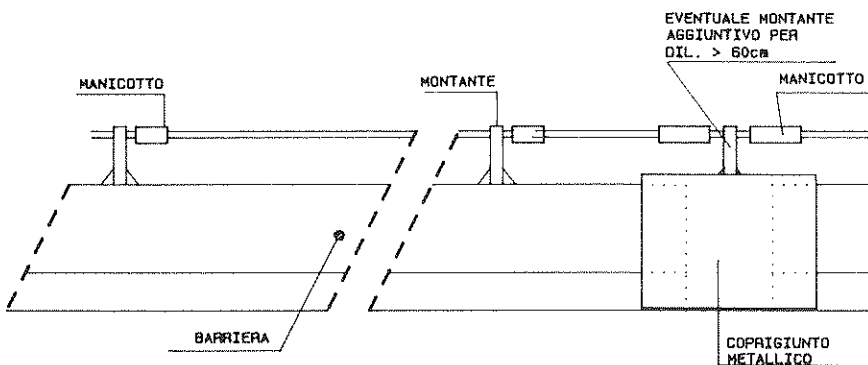


SOLUZIONE PER DILATAZIONI FINO A 8cm.



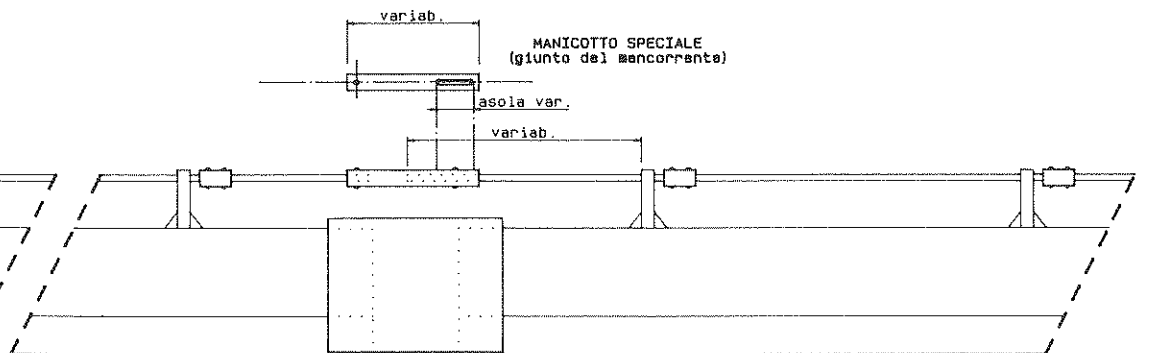
SCHEMA DI SMONTAGGIO

SOLUZIONE PER DILATAZIONI MAGGIORI DI 60cm.



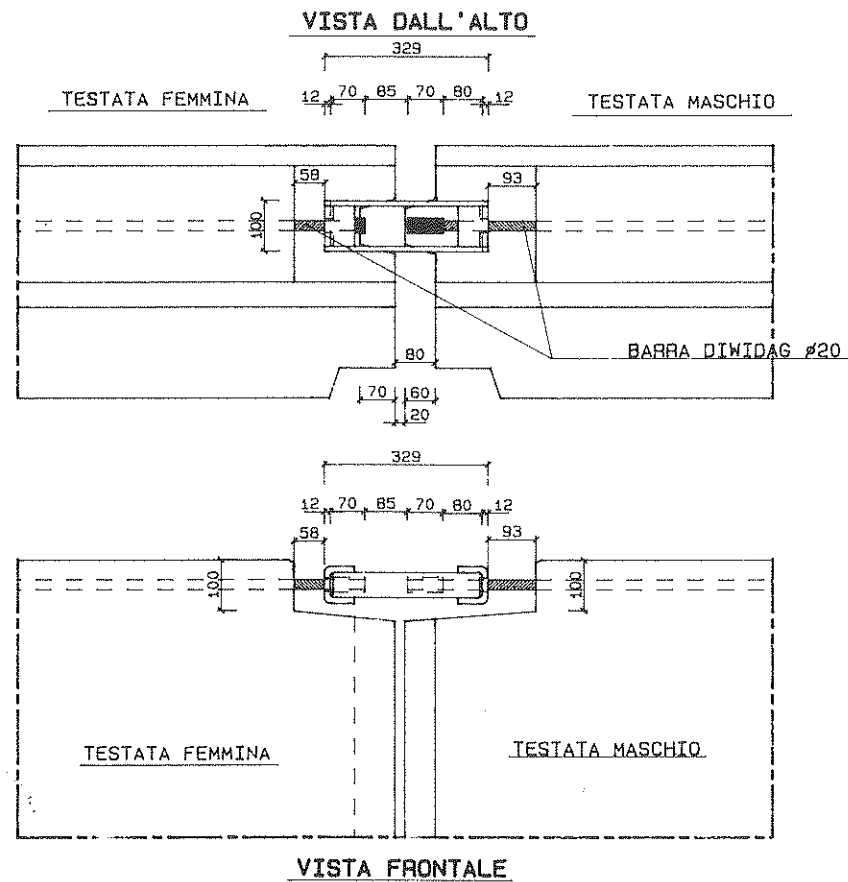
SCHEMA DI SMONTAGGIO

SOLUZIONE PER DILATAZIONI COMPRESSE TRA 8cm. E 60cm.

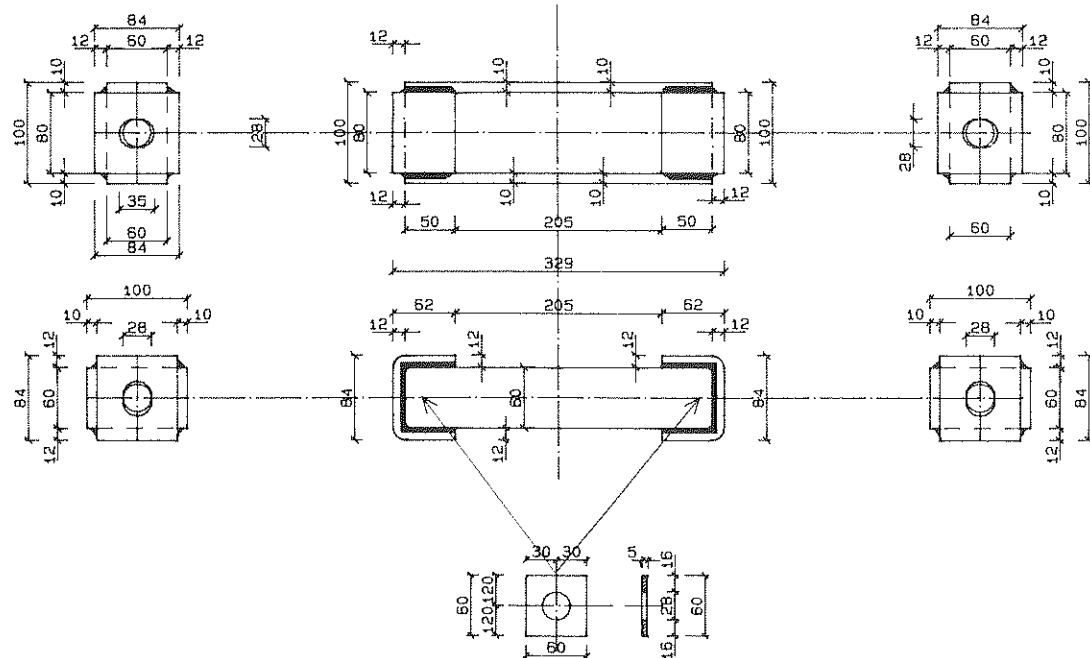


ELEMENTI DI COLLEGAMENTO nelle barriere da ponte sul giunto di dilatazione

MANICOTTO SU GIUNTO DI DILATAZIONE



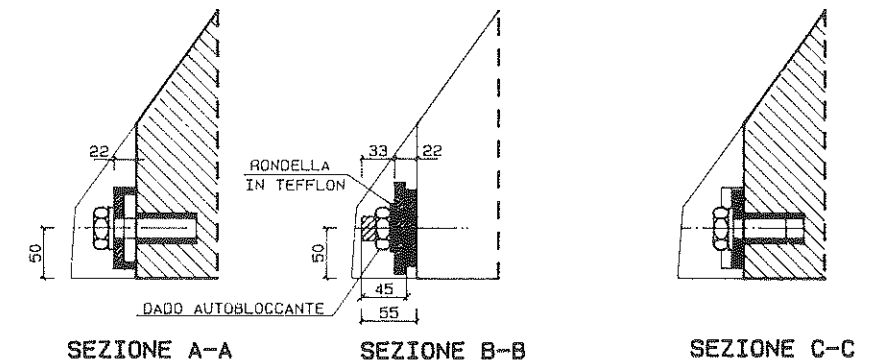
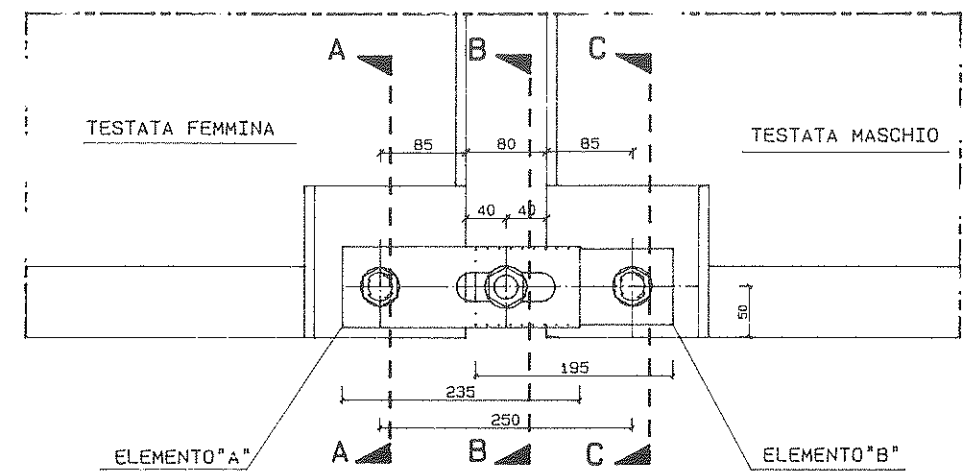
PARTICOLARE COSTRUTTIVO



Piastine antistrappo
spess. 5 mm. con foro ø25

ELEMENTI DI RACCORDO SU GIUNTO DI DILATAZIONE

VISTA FRONTALE



-ARTICOLARI COSTRUTTIVI

